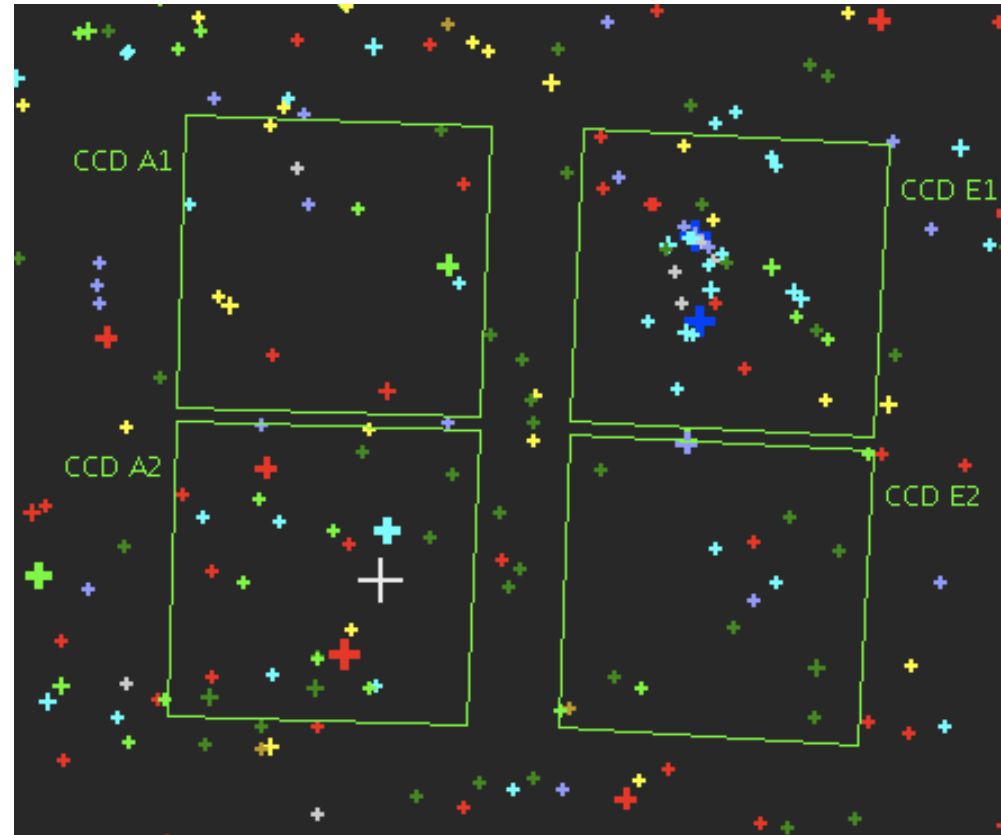


SRa01 on NGC2264

Bloc 1607.1

NGC2264 on E1



Planning of delivery of N2

Feb 15th	LRc01	except imagerettes
March 15th	SRc01	Sismo+E1
April 30th	SRc01	complete
June 30th	LRa01	improvement of jitter
July 30th	SRa01	
September	IRa01	New version sismo
....	Lrc02	

The cluster in the exofield E1 (P1)

Proposed targets: $R < 16$

746

Observed:

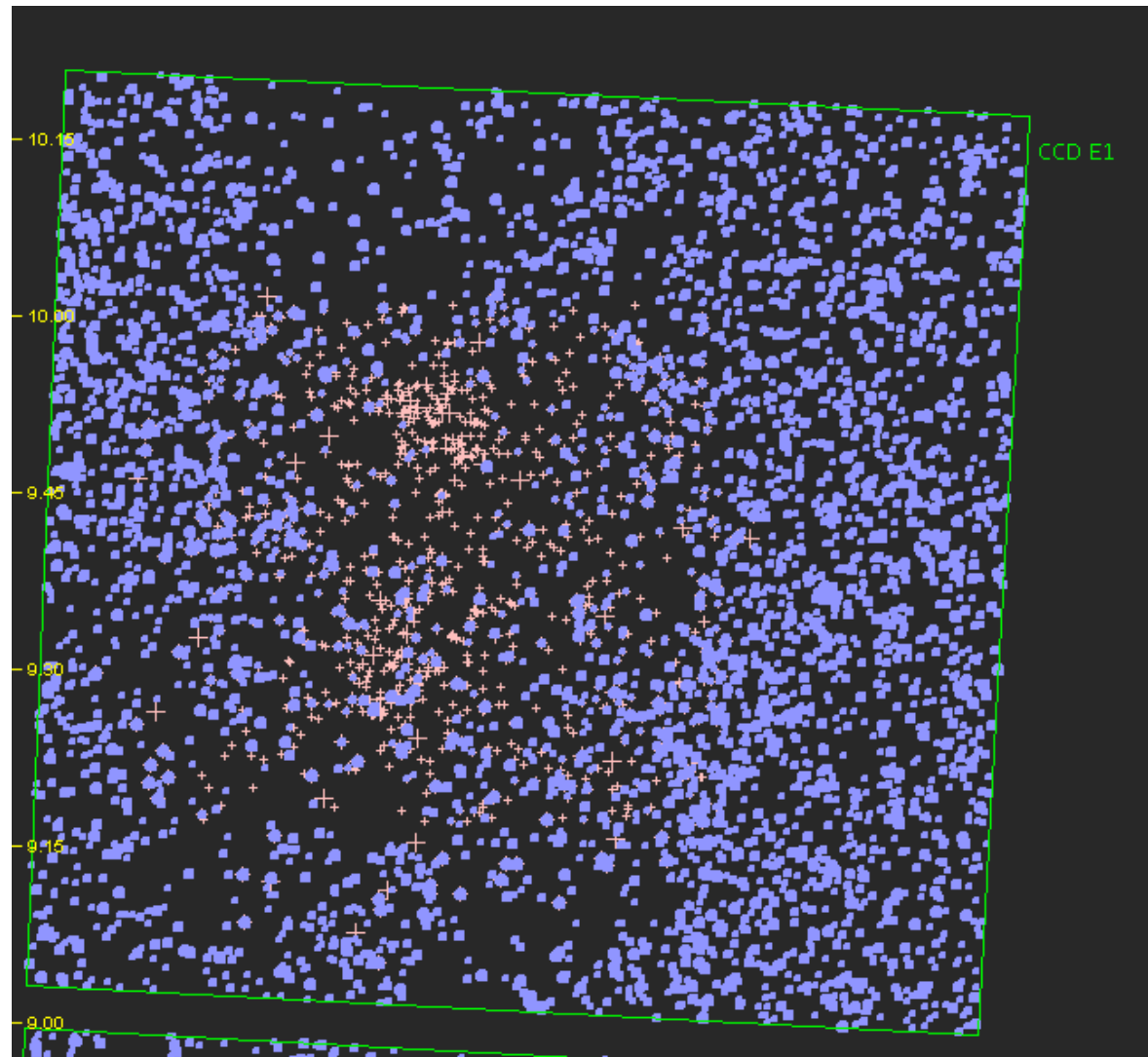
636

chrom: 267 ($R < 14.5$)

mono: 365 ($R \geq 14.5$)

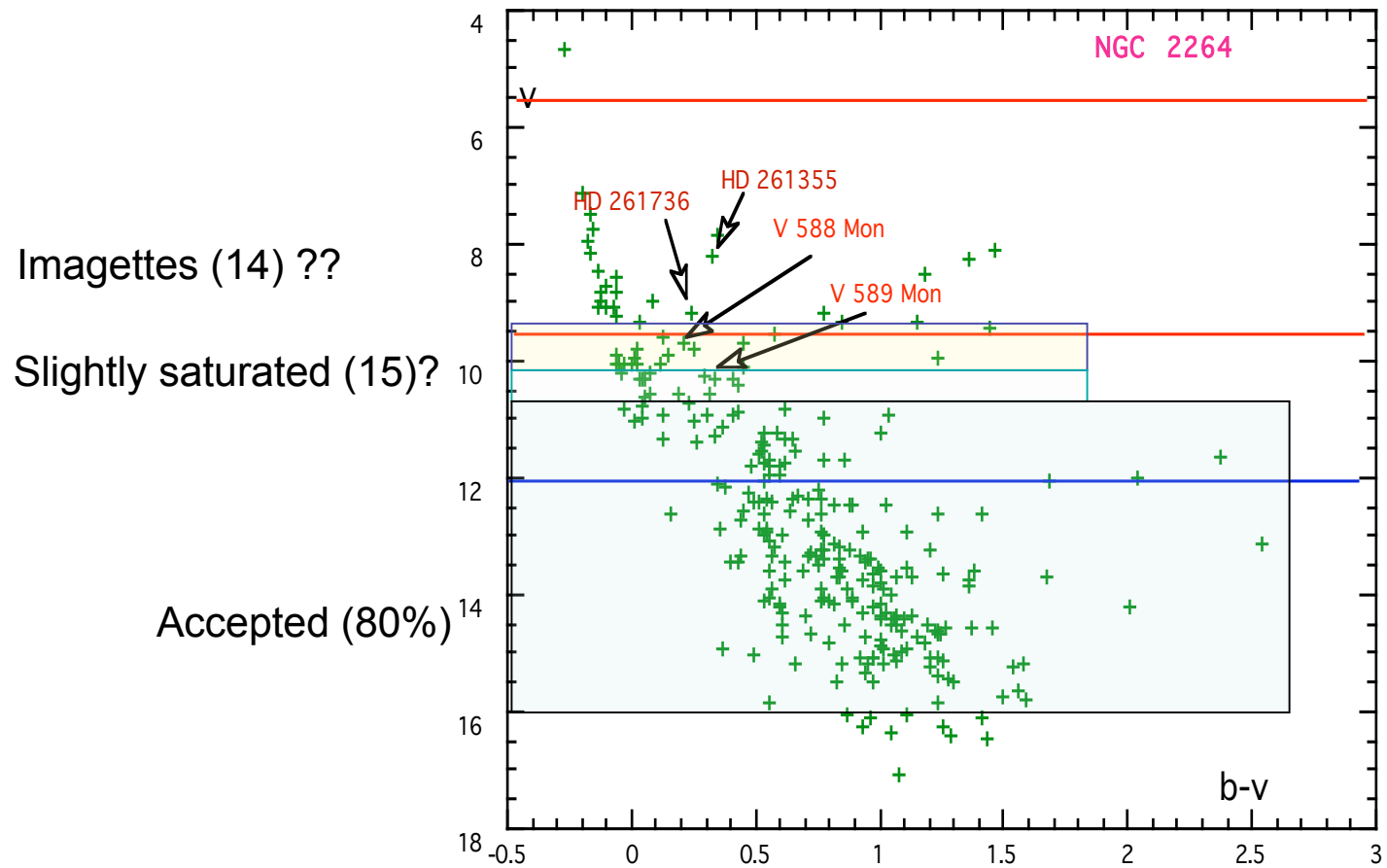
imagettes : 14

Quite succesfull...



SC27th Prog obs

The bright stars of the cluster



SC27th Prog obs

Other APs

		proposed	observed
Binaries	E2	5	4
+ LP var (P2)			
B/Be (P3)	E1	63	45
	E2	83	61

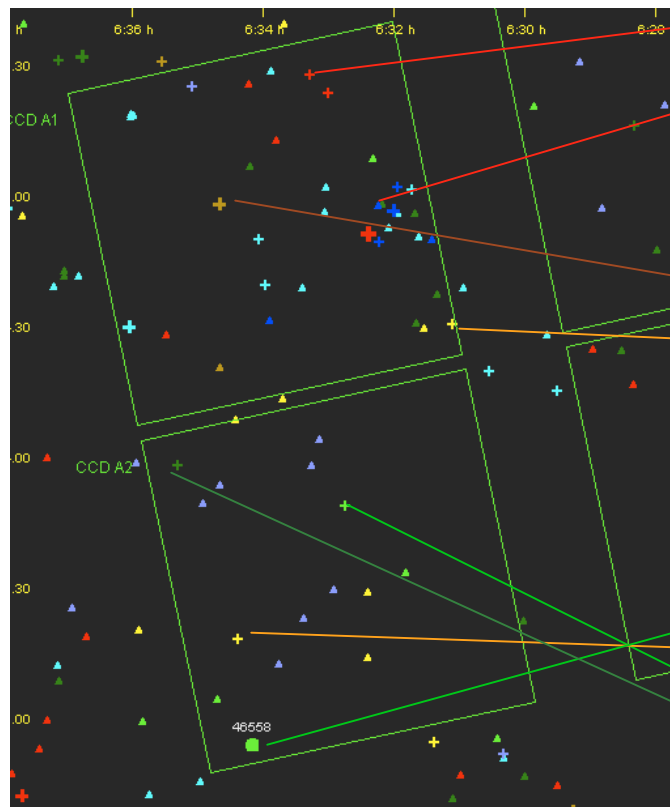
The sismo targets

CCD A1										
Priority	C Id	Name	m_V	SpT	M_V	$\log(\text{Teff})$	$V\sin(i)$	Parallax	Star type	SCAO
0	3619	HD 48784	6.66	F 0.0	1.87	3.84	108.2	11.03		X
1	3437	HD 49566	7.71	G 5.0	0.41	3.71		3.47		X
2	3905	HD 49310	9.09	A 0.0	1.48	4.09			Ap star	
3	3218	HD 48976	7.3	K 5.0 III	0.03	3.5		3.52		X
4	3573	HD 48752	8.3	B 9.0 V	0.69	4.03				
5	3467	HD 49607	8.05	G 5.0	0.44	3.69				X
6										
7										
8										
9										

CCD A2										
Priority	C Id	Name	m_V	SpT	M_V	$\log(\text{Teff})$	$V\sin(i)$	Parallax	Star type	SCAO
0	2820	HD 48977	5.93	B 2.5 V	-1.48	4.25	38.1	2.92	Hipparcos possible microvariable	X
1	2503	HD 49161	4.77	K 4.0 III	-1.09	3.62		6.73	Hipparcos possible microvariable	X
2	2676	HD 49015	7.5	F 0.0 IV	3.29	3.84	44.5	14.37	Gamma Doradus	
3	3048	[SC93] 425	8.04	A 7.0 V	0.43					X
4	2807	HD 263425	9.48	A 2.0	1.87	4.13				
5	2983	HD 49429	6.93	K 0.0	0.2	3.71		4.51		X
6	2832	HD 49677	8.06	B 9.0	0.45	3.96				X
7										
8										
9										

SRa02: HD 46375: reflected light from planet + O stars

Preliminary position : bloc 1107.1



HD 46179 6.69 B9V
HD 45910 6.76 Be
HD 46105 7.13 A1p
HD 46424 6.98 G5V

HD 46375 7.84 K1IV

HD 42641 5.83 K0V
HD 46149 7.59 O8.5V
HD 46150 6.75 O6
HD 46223 7.27 O5
HD 46202 8.19 O9V
HD 46485 8.26 O8
HD 46612 6.88 M0III Hipp var
HD 46006 7.87 G7III

Quite poor and unknown....

HD 46558 Prim Targ. Cand.
HD 46597 7.3 G5III
HD 46303 7.6 F5V
HD 46748 7.98 A2V

SC27th Prog obs

