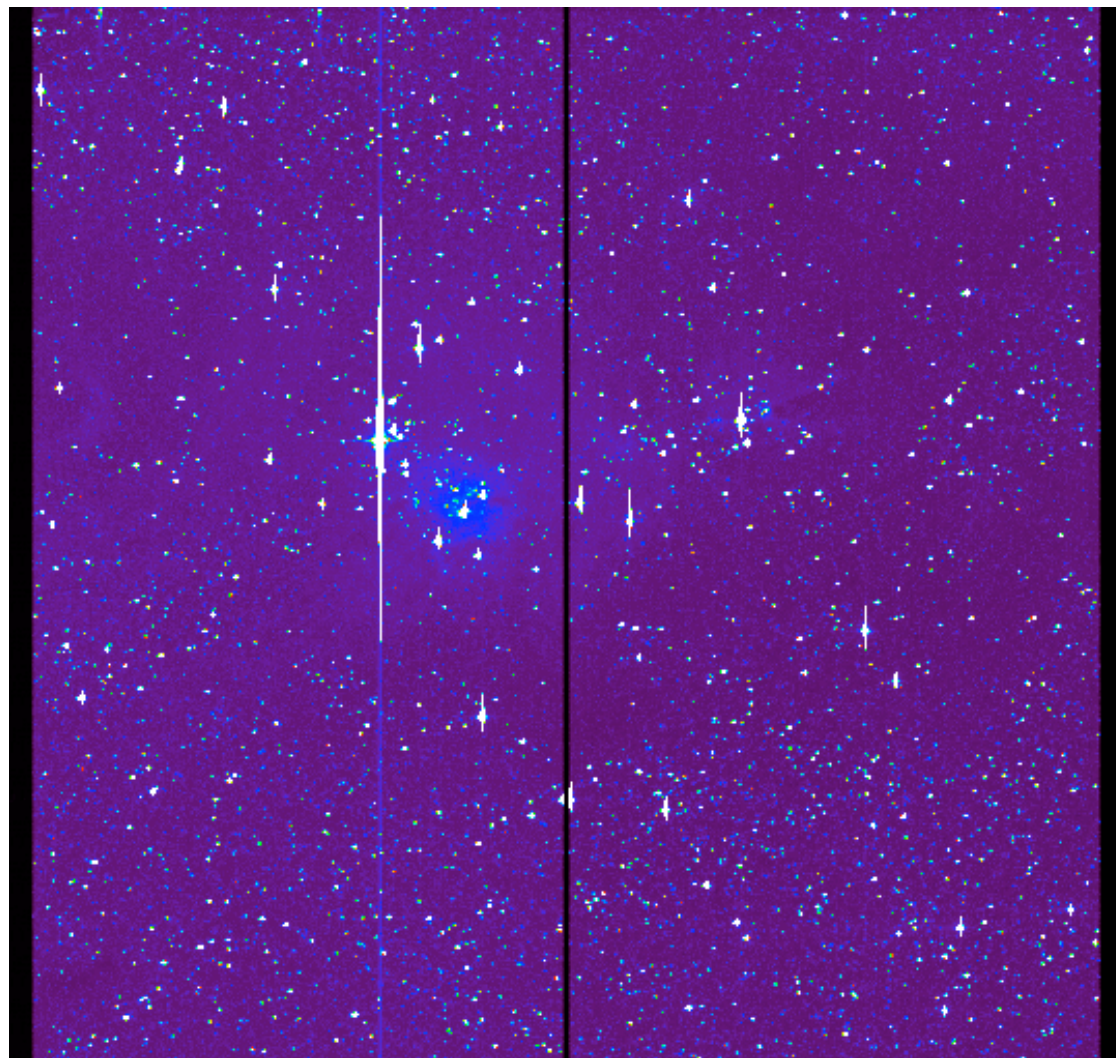




SRa01 : Cluster CCD E1





Summary of Evolutions of the N0 -> N1/N2 processing

E/ : Correction of bright pixel in background windows for run IRA01, SRC01, LRC01, LRA01, SRA01. For future run the problem will be solved by the new on board software. Star light curve correction under test.

E/ : Correction of bright pixel in star LC.
detection and correction are progressing.

E/ : Jitter correction of the exo white LC.

E/ : Improvement of the offset correction on exo channel.

E/S : Temperature correction are not well understood. Work in progress

E/S : Photometry on "imagettes". On PF channel two steps 1) aperture photometry shall be implementated in July, 2) PSF fitting later, probably in October.

E/S : Flag of eclipses input/output will be added soon

E = exoplanet, S = seismology



Concerning IRa01, don't forget that:

It was the first run and

- the aperture on the seismology channel was not optimized

- the data correction are not the best one (AOCS eclipses transition)

IRa01 data will be processed with a new version of the pipeline and should be delivered on September.

The next delivery are

- SRc01 -> March 17

- LRa01 -> End of june

- SRa01 -> End of july