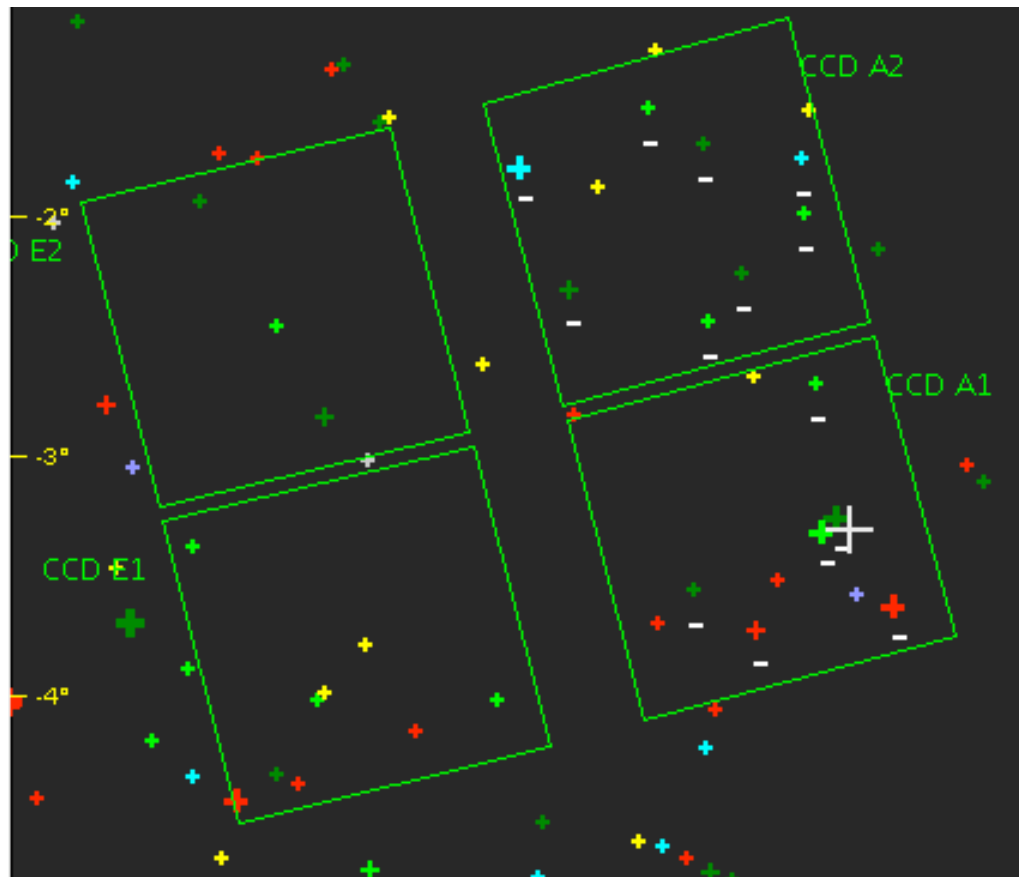


Future pointings

As decided at SC29th

SRc02

- A seismology short run centered on HD 174732
- Recall of the Decision taken at SC 28th
- Bloc 1640.6



SRc02: Exoabsket

<i>Selection</i>	<i>Criteria</i>	<i>Stars</i>	<i>Dwarfs</i>	<i>Giants</i>	<i>Binaries</i>	<i>..AP.</i>
Selection 1	RA : 19:01:15 Dec: -1.51.46 Targets: 206145834	E1: 0 E2: 1	E1: 0 E2: 0	E1: 0 E2: 0	E1: 0 E2: 0	E1: 0 E2: 0
Selection 2	RA : 19:01:02 Dec: -2.32.25 Targets: 206134385	E1: 0 E2: 1	E1: 0 E2: 0	E1: 0 E2: 0	E1: 0 E2: 0	E1: 0 E2: 0
Selection 3	RA : 18:56:32 Dec: -4.03.46 Targets: 205881194	E1: 1 E2: 0	E1: 0 E2: 0	E1: 0 E2: 0	E1: 0 E2: 0	E1: 0 E2: 0
Selection 4	RA : 18:59:28 Dec: -4.03.03 Targets: 206048251	E1: 1 E2: 0	E1: 0 E2: 0	E1: 0 E2: 0	E1: 0 E2: 0	E1: 0 E2: 0
Selection 5	RA : 18:59:57 Dec: -3.26.12 Targets: 206075020	E1: 1 E2: 0	E1: 0 E2: 0	E1: 0 E2: 0	E1: 0 E2: 0	E1: 0 E2: 0
Selection 6	RA : 19:00:11 Dec: -3.37.15 Targets: 206088267	E1: 1 E2: 0	E1: 0 E2: 0	E1: 0 E2: 0	E1: 0 E2: 0	E1: 0 E2: 0
Selection 7	RA : 19:00:23 Dec: -4.00.14 Targets: 206100179	E1: 1 E2: 0	E1: 0 E2: 0	E1: 0 E2: 0	E1: 0 E2: 0	E1: 0 E2: 0
Selection 8	RA : 19:00:36 Dec: -3.17.03 Targets: 206111441	E1: 1 E2: 0	E1: 0 E2: 0	E1: 0 E2: 0	E1: 0 E2: 0	E1: 0 E2: 0
Selection 9	RA : 19:01:17 Dec: -2.44.25 Targets: 206148032	E1: 0 E2: 1	E1: 0 E2: 0	E1: 0 E2: 0	E1: 0 E2: 0	E1: 0 E2: 0
Selection 10	RA : 19:01:19 Dec: -3.25.47 Targets: 206150275	E1: 1 E2: 0	E1: 0 E2: 0	E1: 0 E2: 0	E1: 0 E2: 0	E1: 0 E2: 0
Selection 11	RA : 19:02:29 Dec: -2.27.56 Targets: 206213392	E1: 0 E2: 1	E1: 0 E2: 0	E1: 0 E2: 0	E1: 0 E2: 0	E1: 0 E2: 0
Selection 12	RA : 19:03:03 Dec: -2.00.09 Targets: 206244123	E1: 0 E2: 1	E1: 0 E2: 0	E1: 0 E2: 0	E1: 0 E2: 0	E1: 0 E2: 0
Selection 13	RA : 19:00:04 Dec: -3.10.04 Targets: 206081271	E1: 1 E2: 0	E1: 0 E2: 0	E1: 0 E2: 0	E1: 0 E2: 0	E1: 0 E2: 0
Selection 14	RA : 19:02:44 Dec: -2.05.08 Targets: 206226704	E1: 0 E2: 1	E1: 0 E2: 0	E1: 0 E2: 0	E1: 0 E2: 0	E1: 0 E2: 0
Selection 15	MR: 9.0/14.0	E1: 3022 E2: 3011	E1: 0 E2: 0	E1: 0 E2: 0	E1: 0 E2: 0	E1: 0 E2: 0
Selection 16	MR: 14.0/15.0	E1: 4692 E2: 6170	E1: 0 E2: 0	E1: 0 E2: 0	E1: 0 E2: 0	E1: 0 E2: 0
Exobasket (total)		E1: 7722 E2: 9187	E1: 0 E2: 0	E1: 0 E2: 0	E1: 0 E2: 0	E1: 0 E2: 0
Colour photometry Selection 1	MR: 10.5/13.7	E1: 2286 E2: 2220	E1: 0 E2: 0	E1: 0 E2: 0	E1: 0 E2: 0	E1: 0 E2: 0
Colour photometry Total		E1: 2286 E2: 2220	E1: 0 E2: 0	E1: 0 E2: 0	E1: 0 E2: 0	E1: 0 E2: 0

Aps: 14 B/Be stars; kept except sel 5,13,2, 11 not found

SRc02: Line of sight quaternion and corners

alpha	delta	roll	psi	theta	phi
q1	q2	q3	q4		
284.10672500		-2.86445310		-14.63644398	
0.689026053772905		0.702174741186153		0.179403590234816	-0.002842863548513 0.0683 -0.0033 0.0303

#Coordinates on the sky of CDD A1 corners (RA, Dec)

Corners 0 (line #1 column #1) 282.6202915355034 -2.4954475891298697
Corners 1 (line #2048 column #1) 283.9004492179378 -2.8488034571115746
Corners 2 (line #2048 column #2048) 283.57232968181404 -4.099026650293983
Corners 3 (line #1 column #2048) 282.2786309631946 -3.7475726012022506

#Coordinates on the sky of CDD A2 corners (RA, Dec)

Corners 0 (line #1 column #1) 282.9734691648605 -1.1694491782830483
Corners 1 (line #2048 column #1) 284.2471754735243 -1.5260499828435163
Corners 2 (line #2048 column #2048) 283.91694376805015 -2.7912997604960226
Corners 3 (line #1 column #2048) 282.6372548979106 -2.438298842033748

Coordinates on the sky of CDD E1 corners (RA, Dec)

Corners 0 (line #1 column #1) 285.26931666066616 -4.529941559069063
Corners 1 (line #2048 column #1) 283.9644777671878 -4.202931490621901
Corners 2 (line #2048 column #2048) 284.28995521208816 -2.9517439773935172
Corners 3 (line #1 column #2048) 285.58309029538935 -3.269730698868755

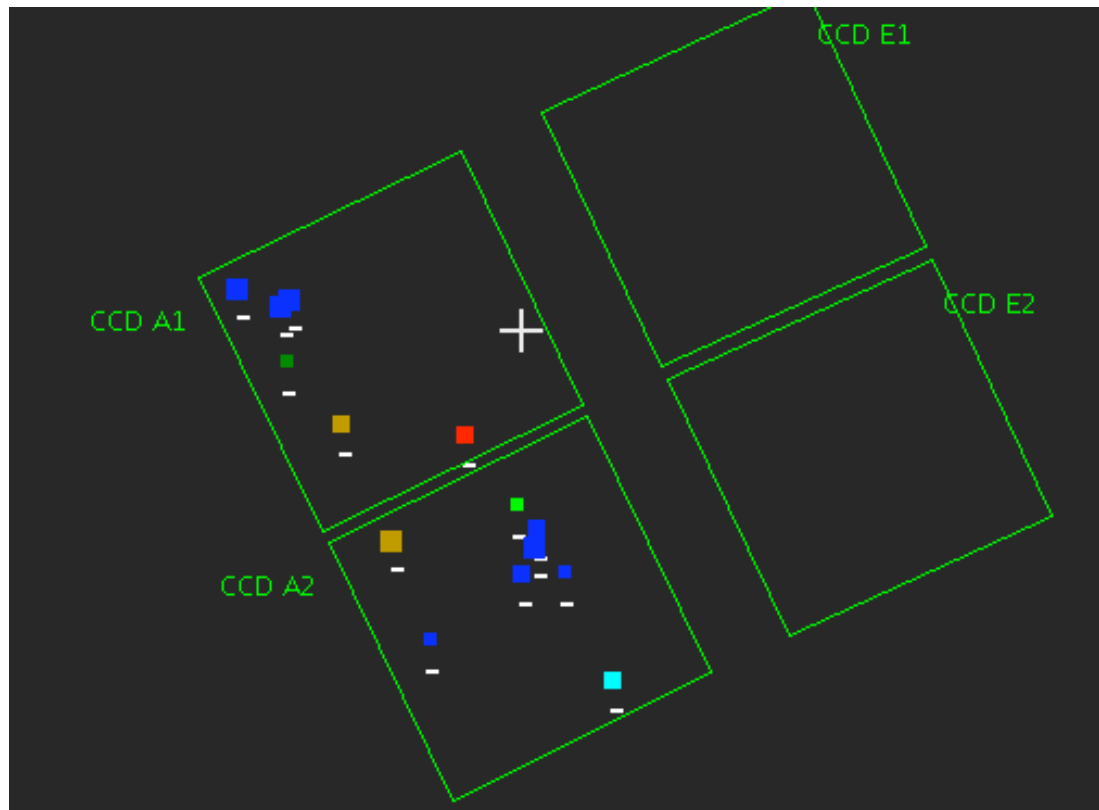
Coordinates on the sky of CDD E2 corners (RA, Dec)

Corners 0 (line #1 column #1) 285.59857698673153 -3.2105430824617054
Corners 1 (line #2048 column #1) 284.3055641525822 -2.8935956404245893
Corners 2 (line #2048 column #2048) 284.6352954655101 -1.6281582473733174
Corners 3 (line #1 column #2048) 285.92423357110346 -1.939114211333505

SRa02

- A mixed short run of 30 days dedicated to HD 46375 (AP) and O stars (CP)

Bloc 1579.10



SRa02: Line of sight, quaternion and corners

- # Line of sight (as requested) and quaternion computed with bias angles
- #
- # alpha delta roll q1 q2 q3 q4 psi theta phi
- 97.55544167 5.66731440 -25.36355602 0.732499809602137 -
- 0.643699085132196 -0.189867855287371 -0.114217836879280 0.0683 -0.0033 0.0303
- #
- #Coordinates on the sky of CDD A1 corners (RA, Dec)
- Corners 0 (line #1 column #1) 98.95102448302244 5.029487977612718
- Corners 1 (line #2048 column #1) 97.75591136865899 5.61361130065525
- Corners 2 (line #2048 column #2048) 98.3138552971857 6.7822338772593005
- Corners 3 (line #1 column #2048) 99.52307835508296 6.196770446445854

- #Coordinates on the sky of CDD A2 corners (RA, Dec)
- Corners 0 (line #1 column #1) 98.35474795861657 3.794321686677077
- Corners 1 (line #2048 column #1) 97.1671111856526 4.379918006666262
- Corners 2 (line #2048 column #2048) 97.72888548228285 5.560181747819196
- Corners 3 (line #1 column #2048) 98.923584412847 4.976519518820563

- #Coordinates on the sky of CDD E1 corners (RA, Dec)
- Corners 0 (line #1 column #1) 96.71860313919497 7.5233558564681635
- Corners 1 (line #2048 column #1) 97.9463913124711 6.957433775660526
- Corners 2 (line #2048 column #2048) 97.39106207919617 5.787166510161267
- Corners 3 (line #1 column #2048) 96.1740024887902 6.341382571405553

- #Coordinates on the sky of CDD E2 corners (RA, Dec)
- Corners 0 (line #1 column #1) 96.14770643175481 6.2860802591344775
- Corners 1 (line #2048 column #1) 97.36479787711838 5.732931509203783
- Corners 2 (line #2048 column #2048) 96.80369853563062 4.552256545088707
- Corners 3 (line #1 column #2048) 95.59046282063007 5.098383536001535

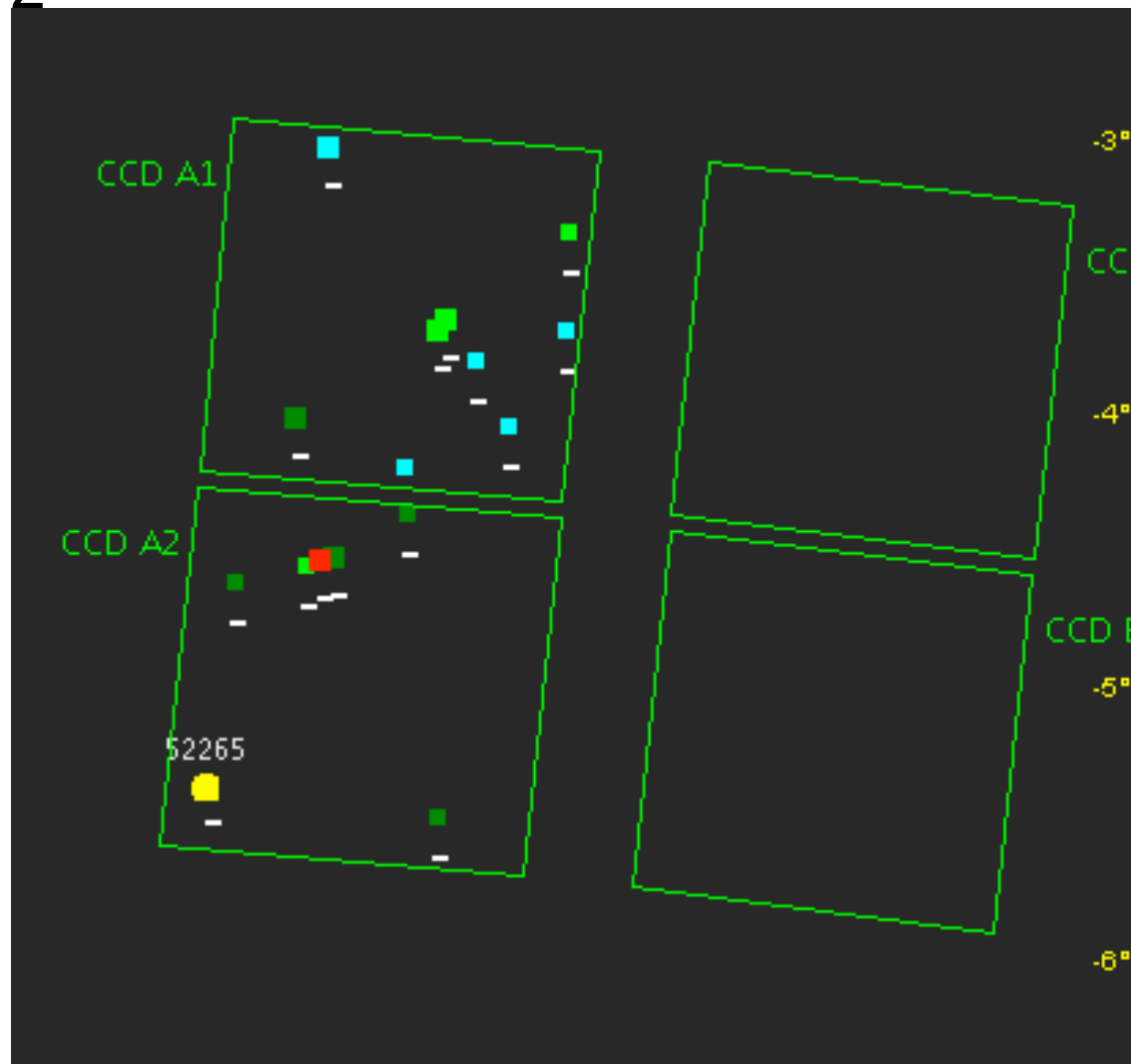
SRa02: Exobasket

<i>Selection</i>	<i>Criteria</i>	<i>Stars</i>	<i>Dwarfs</i>	<i>Giants</i>	<i>Binaries</i>	<i>..AP.</i>
Selection 1	RA : 6:28:06 Dec: 5.48.57 Targets: 221679736	E1: 0 E2: 1	E1: 0 E2: 0	E1: 0 E2: 0	E1: 0 E2: 0	E1: 0 E2: 0
Selection 2	RA : 6:27:00 Dec: 5.25.00 Targets: 221663913	E1: 0 E2: 1	E1: 0 E2: 0	E1: 0 E2: 0	E1: 0 E2: 0	E1: 0 E2: 0
Selection 3	RA : 6:27:27 Dec: 4.54.38 Targets: 221670766	E1: 0 E2: 1	E1: 0 E2: 0	E1: 0 E2: 0	E1: 0 E2: 0	E1: 0 E2: 0
Selection 4	RA : 6:31:03 Dec: 6.45.35 Targets: 221717655	E1: 1 E2: 0	E1: 0 E2: 0	E1: 0 E2: 0	E1: 0 E2: 0	E1: 0 E2: 0
Selection 5	RA : 6:30:04 Dec: 7.02.54 Targets: 221704926	E1: 1 E2: 0	E1: 0 E2: 0	E1: 0 E2: 0	E1: 0 E2: 0	E1: 0 E2: 0
Selection 6	RA : 6:28:28 Dec: 7.07.33 Targets: 221683922	E1: 1 E2: 0	E1: 0 E2: 0	E1: 0 E2: 0	E1: 0 E2: 0	E1: 0 E2: 0
Selection 7	RA : 6:26:27 Dec: 7.06.58 Targets: 221653905	E1: 1 E2: 0	E1: 0 E2: 0	E1: 0 E2: 0	E1: 0 E2: 0	E1: 0 E2: 0
Selection 8	RA : 6:27:29 Dec: 6.50.15 Targets: 221670294	E1: 1 E2: 0	E1: 0 E2: 0	E1: 0 E2: 0	E1: 0 E2: 0	E1: 0 E2: 0
Selection 9	RA : 6:29:23 Dec: 6.46.55 Targets: 221696166	E1: 1 E2: 0	E1: 0 E2: 0	E1: 0 E2: 0	E1: 0 E2: 0	E1: 0 E2: 0
Selection 10	RA : 6:29:05 Dec: 6.07.47 Targets: 221692810	E1: 1 E2: 0	E1: 0 E2: 0	E1: 0 E2: 0	E1: 0 E2: 0	E1: 0 E2: 0
Selection 11	RA : 6:27:24 Dec: 5.30.54 Targets: 221669743	E1: 0 E2: 1	E1: 0 E2: 0	E1: 0 E2: 0	E1: 0 E2: 0	E1: 0 E2: 0
Selection 12	RA : 6:24:42 Dec: 5.30.59 Targets: 221626485	E1: 0 E2: 1	E1: 0 E2: 0	E1: 0 E2: 0	E1: 0 E2: 0	E1: 0 E2: 0
Selection 13	RA : 6:23:59 Dec: 5.17.29 Targets: 221615211	E1: 0 E2: 1	E1: 0 E2: 0	E1: 0 E2: 0	E1: 0 E2: 0	E1: 0 E2: 0
Selection 14	RA : 6:23:04 Dec: 5.09.32 Targets: 221600627	E1: 0 E2: 1	E1: 0 E2: 0	E1: 0 E2: 0	E1: 0 E2: 0	E1: 0 E2: 0
Selection 15	RA : 6:23:28 Dec: 5.01.32 Targets: 221607201	E1: 0 E2: 1	E1: 0 E2: 0	E1: 0 E2: 0	E1: 0 E2: 0	E1: 0 E2: 0
Selection 16	RA : 6:25:05 Dec: 4.56.04 Targets: 221632964	E1: 0 E2: 1	E1: 0 E2: 0	E1: 0 E2: 0	E1: 0 E2: 0	E1: 0 E2: 0
Selection 17	MR: 10.0/13.0	E1: 557 E2: 561	E1: 0 E2: 0	E1: 0 E2: 0	E1: 0 E2: 0	E1: 0 E2: 0
Selection 18	MR: 13.0/15.0	E1: 2703 E2: 2283	E1: 0 E2: 0	E1: 0 E2: 0	E1: 0 E2: 0	E1: 0 E2: 0
Selection 19	MR: 15.0/16.0	E1: 3287 E2: 2897	E1: 0 E2: 0	E1: 0 E2: 0	E1: 0 E2: 0	E1: 0 E2: 0
Exobasket (total)		E1: 6554 E2: 5750	E1: 0 E2: 0	E1: 0 E2: 0	E1: 0 E2: 0	E1: 0 E2: 0
Colour photometry Selection 1	MR: 10.0/14.5	E1: 2274 E2: 2026	E1: 0 E2: 0	E1: 0 E2: 0	E1: 0 E2: 0	E1: 0 E2: 0
Colour photometry Total		E1: 2274 E2: 2026	E1: 0 E2: 0	E1: 0 E2: 0	E1: 0 E2: 0	E1: 0 E2: 0

Aps: 3 Ebs + 13 B/Be, all kept except sel 4, not found

LRa02

- A long run centered on HD 52265
- Bloc 1338.12



LRa02: Line of sight quaternion and corners

Line of sight (as requested) and quaternion computed with bias angles

#

# alpha	delta	roll	q1	q2	q3	q4	psi	
theta	phi							
103.56402917		-4.38000000		5.99644398		0.669816104021320		-
0.731860427907844		-0.047964552925268		0.115871059885229		0.0683	-0.0033	0.0303

#

#Coordinates on the sky of CDD A1 corners (RA, Dec)

Corners 0 (line #1 column #1) 105.08824494920083 -4.204327536429814
Corners 1 (line #2048 column #1) 103.76292859059214 -4.322094864674663
Corners 2 (line #2048 column #2048) 103.62870617709581 -3.0404182647338174
Corners 3 (line #1 column #2048) 104.96283780110183 -2.9160728339266946

#Coordinates on the sky of CDD A2 corners (RA, Dec)

Corners 0 (line #1 column #1) 105.22992136507686 -5.573017142644348
Corners 1 (line #2048 column #1) 103.90620053195917 -5.6858803965117986
Corners 2 (line #2048 column #2048) 103.76781339155019 -4.381710367959172
Corners 3 (line #1 column #2048) 105.09270907926583 -4.263764442666658

#Coordinates on the sky of CDD E1 corners (RA, Dec)

Corners 0 (line #1 column #1) 101.89157223750391 -3.2367935587306915
Corners 1 (line #2048 column #1) 103.22551440225392 -3.081164652628444
Corners 2 (line #2048 column #2048) 103.36144712808559 -4.362836197564913
Corners 3 (line #1 column #2048) 102.0375159908647 -4.523025861543054

#Coordinates on the sky of CDD E2 corners (RA, Dec)

Corners 0 (line #1 column #1) 102.04369773574966 -4.583895316441412
Corners 1 (line #2048 column #1) 103.36733938239512 -4.422748713798373
Corners 2 (line #2048 column #2048) 103.50516587740145 -5.7270989565100905

Slightly moved with respect to the preceding proposed position to include 2 EBs

LRc03: Line of sight quaternion and corners

```
# Line of sight (as requested) and quaternions computed with bias angles
#
# alpha      delta      roll      q1          q2          q3          q4
#           psi      theta     phi
277.52999583 -7.39333330  5.36355602  0.655629114838423  0.751275346671347  0.013754755569443  0.074475660180073
#           0.0683      -0.0033      0.0303
#
#Coordinates on the sky of CDD A1 corners (RA, Dec)
Corners 0 (line #1 column #1) 275.99470323726575 -7.556466758322833
Corners 1 (line #2048 column #1) 277.32934859867294 -7.44912681455338
Corners 2 (line #2048 column #2048) 277.44967632441757 -8.738619186321456
Corners 3 (line #1 column #2048) 276.09988994645505 -8.852966248462007

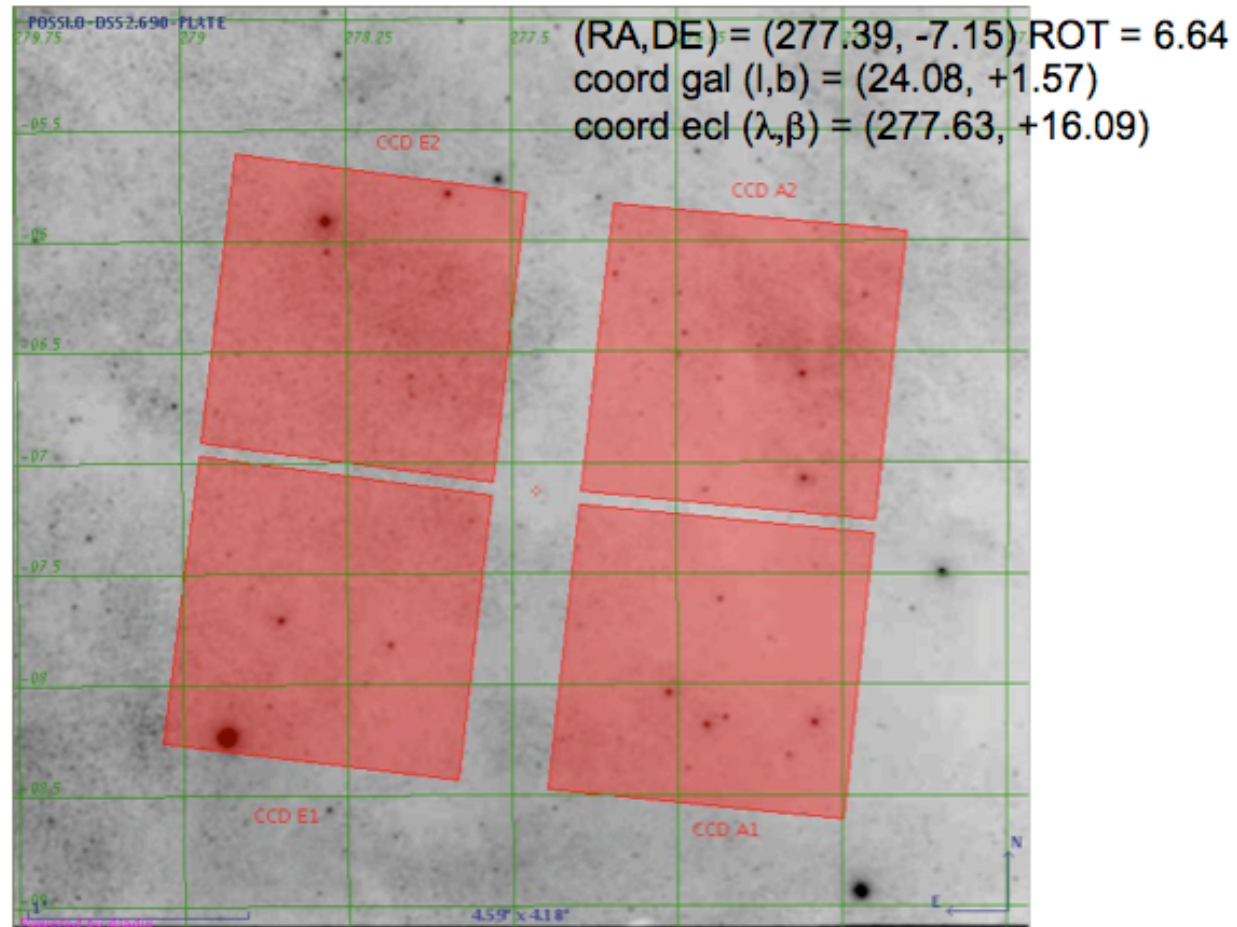
#Coordinates on the sky of CDD A2 corners (RA, Dec)
Corners 0 (line #1 column #1) 275.87556289811994 -6.192142999815164
Corners 1 (line #2048 column #1) 277.202075461254 -6.090100934254558
Corners 2 (line #2048 column #2048) 277.3251446730194 -7.389453048631379
Corners 3 (line #1 column #2048) 275.99120349671284 -7.4969482481935925

#Coordinates on the sky of CDD E1 corners (RA, Dec)
Corners 0 (line #1 column #1) 279.20568558448946 -8.564765437894163
Corners 1 (line #2048 column #1) 277.85741037663223 -8.702148693369642
Corners 2 (line #2048 column #2048) 277.73349715816516 -7.412801942006361
Corners 3 (line #1 column #2048) 279.0655721199791 -7.27137615060561

#Coordinates on the sky of CDD E2 corners (RA, Dec)
Corners 0 (line #1 column #1) 279.05970199130167 -7.210479339964503
Corners 1 (line #2048 column #1) 277.7281974033867 -7.352828994598164
Corners 2 (line #2048 column #2048) 277.6038244427448 -6.053472566501689
Corners 3 (line #1 column #2048) 278.92735404627666 -5.9068764445649595
```

LRc03

- A run dedicated to the exoplanet programme
- Bloc 1644 V0 presently



LRc03: Line of sight quaternion and corners

```
# Line of sight (as requested) and quaternion computed with bias angles
#
# alpha      delta      roll      q1      q2      q3      q4
psi         theta      phi
97.55544167      5.66731440      -25.36355602      0.732499809602137
-0.643699085132196      -0.189867855287371      -0.114217836879280      0.0683      -0.0033      0.0303
#
#Coordinates on the sky of CDD A1 corners (RA, Dec)
Corners 0 (line #1 column #1) 275.99470323726575 -7.556466758322833
Corners 1 (line #2048 column #1) 277.32934859867294 -7.44912681455338
Corners 2 (line #2048 column #2048) 277.44967632441757 -8.738619186321456
Corners 3 (line #1 column #2048) 276.09988994645505 -8.852966248462007

#Coordinates on the sky of CDD A2 corners (RA, Dec)
Corners 0 (line #1 column #1) 275.87556289811994 -6.192142999815164
Corners 1 (line #2048 column #1) 277.202075461254 -6.090100934254558
Corners 2 (line #2048 column #2048) 277.3251446730194 -7.389453048631379
Corners 3 (line #1 column #2048) 275.99120349671284 -7.4969482481935925

#Coordinates on the sky of CDD E1 corners (RA, Dec)
Corners 0 (line #1 column #1) 279.20568558448946 -8.564765437894163
Corners 1 (line #2048 column #1) 277.85741037663223 -8.702148693369642
Corners 2 (line #2048 column #2048) 277.73349715816516 -7.412801942006361
Corners 3 (line #1 column #2048) 279.0655721199791 -7.27137615060561

#Coordinates on the sky of CDD E2 corners (RA, Dec)
Corners 0 (line #1 column #1) 279.05970199130167 -7.210479339964503
Corners 1 (line #2048 column #1) 277.7281974033867 -7.352828994598164
Corners 2 (line #2048 column #2048) 277.6038244427448 -6.053472566501689
Corners 3 (line #1 column #2048) 278.92735404627666 -5.9068764445649595
```

LRc03 Seismology targets

<i>CCD A1</i>										
Priority	C Id	Name	m_v	SpT	M_v	$\log(T_{\text{eff}})$	Vsin(i)	Parallax	Star type	SCAO
0	9451	HD 169913	6.53	K 0.0	1.54	3.67		10.03		X
1	9374	HD 169693	8.15	F 8.0	3.13	3.81				X
2	9672	HD 169332	7.35	F 0.0	2.55	3.81		10.98		
3	9514	BD-08 4617	9.36	O 8.5 V	1.75	3.69		1.41		
4	9542	HD 169752	7.58	A 0.0	0.97	3.98		5.71		
5	9551	HD 169650	8.38	A 0.0	2.52	3.91		6.72		
6	9482	HD 169494	9.45	G 0.0	5.5	3.75				
7										
8										
9										

<i>CCD A2</i>										
Priority	C Id	Name	m_v	SpT	M_v	$\log(T_{\text{eff}})$	Vsin(i)	Parallax	Star type	SCAO
0	9310	HD 169370	6.31	K 0.0	1.64	3.62		11.62		X
1	9161	ADS 11318 AB	7.2	G 0.0 IV	-0.41	3.74				X
2	8904	HD 169867	8.19	K 2.0	2.92	3.67				X
3	8990	HD 169868	9.25	F 2.0	3.09	3.84				
4	9071	HD 169556	9.32	G 5.0	3.6	3.77				
5	8815	HD 170117	8.55	F 5.0	2.87	3.8		7.3		
6	8967	HD 169823	8.37	F 8.0	3.83	3.78				X
7										
8										
9										

Position adapted to include the O star!