

anticenter fields

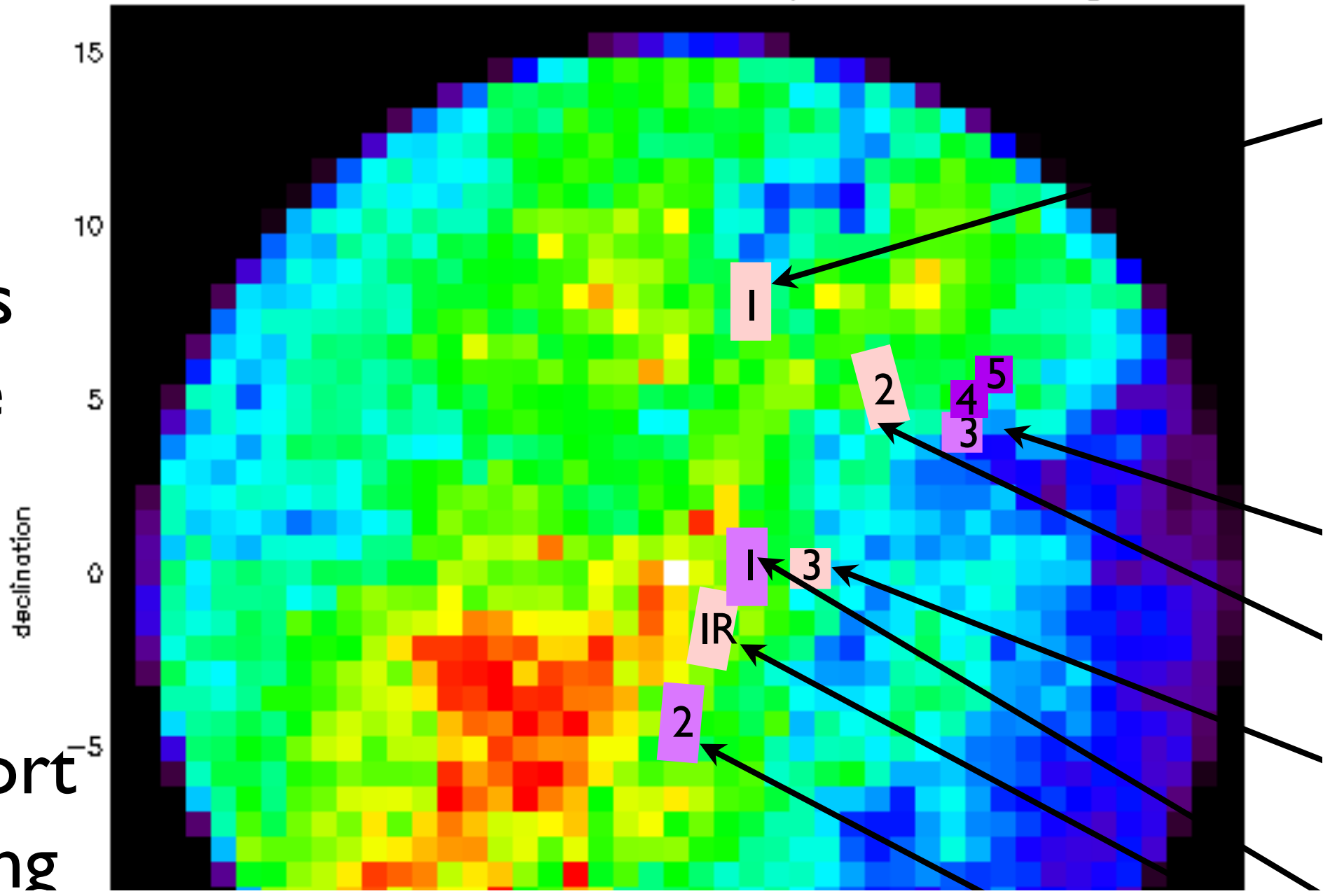
field name	dw r<16	nb planets
SRa03	4270	3!
SRa01	5750	0
SRa02	5550	1
LRa03	6300	0!
LRa02	6380	2
IRa01	7400	2

42807	3261
46241	4672
43023	3918
47220	4614
46150	4832
46573	4861
47278	4254
46886	4459
47240	4294
47278	4254
45975	5672
48553	5815 c (good)
47129	6289
57006	6352

Number of dwarves with $R < 14$ - pixel = 0.7×0.7 deg

o
us
le

short
ong



Number of dwarves with $R < 14 = \text{pixel} \approx 0.7 \times 0.7 \text{ deg}$

2

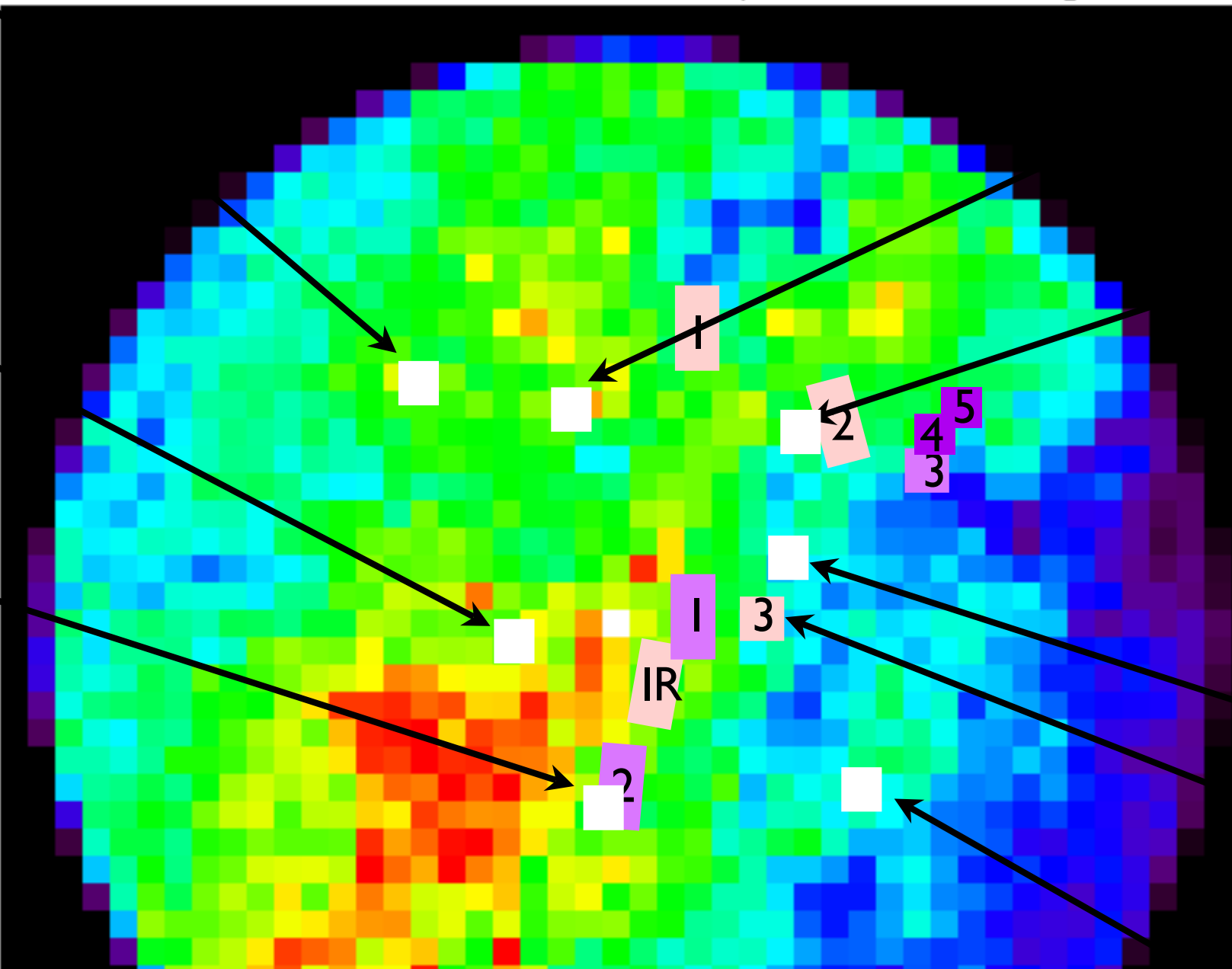
6

short

long

declination

15
10
5
0
-5



avoid yellow, red, dark blue regions in map
non-covered «green/light blue» regions are a
potential interest

reference for 48553, 57006, Berk 32 among si

Corot7:

HARPS proposal for reobserving corot7 h
put in (results in July); if successful, simulta