

How to use free TM volume:

For any new quantities in TM, on board software change is required
No manpower in LESIA to write the new specification and test the new software. Manpower in DLR?

May be possible if the science push very strong, but define precisely what we need with the precision required for the scientific objective.

Number of windows on the seismology CCD.

We must give each seconds an information to the ACS.

We can read of the order of 20000 pixels in one second. If we reduce the window size it should be possible to read 8 windows, but not more.

Some ground based software change required.

To be tested and confirmed -> Manpower for test?





CENTRE NATIONAL D'ÉTUDES SPATIALES



CCD evolution.

M. Auvergne

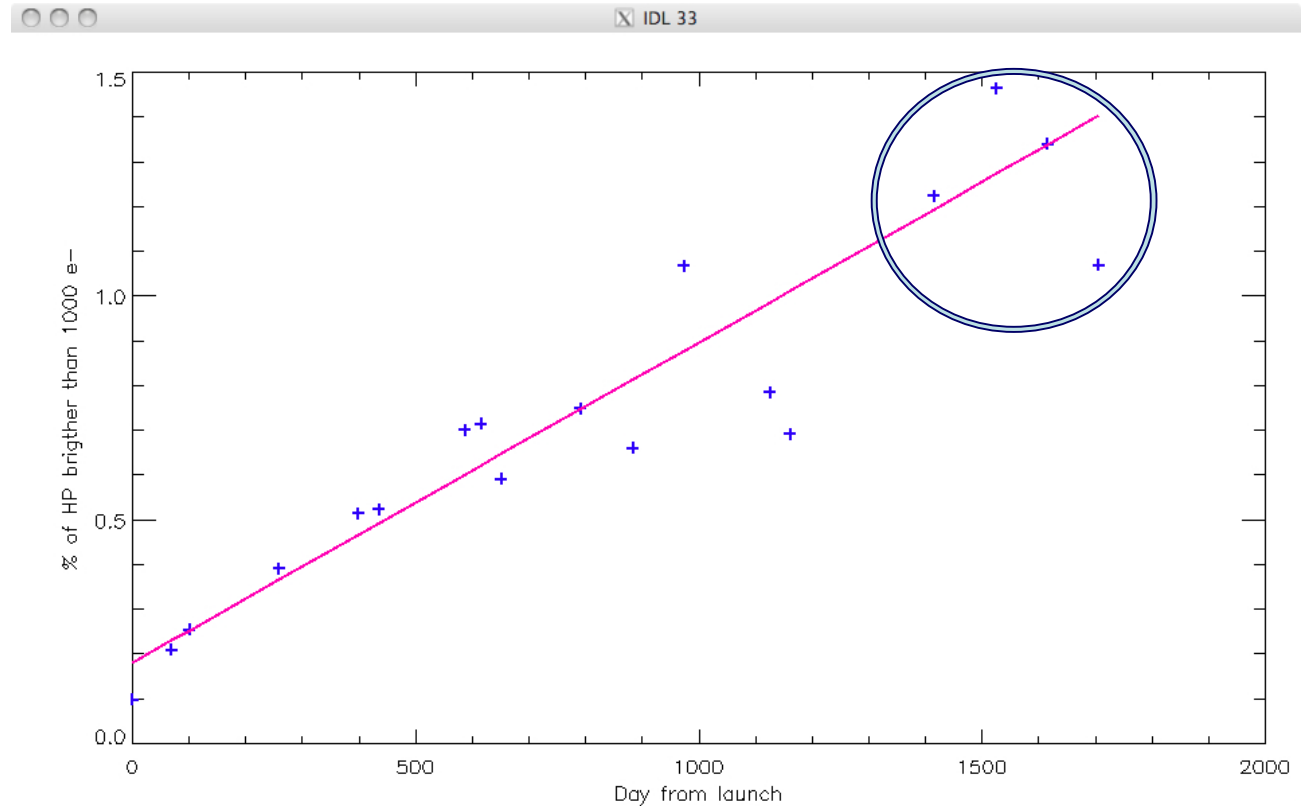


The increase of the number of HP is "normal"

Inside the circle the last runs

Percentage of HP brighter than 1000 e-. Is 1000 e- a good value?

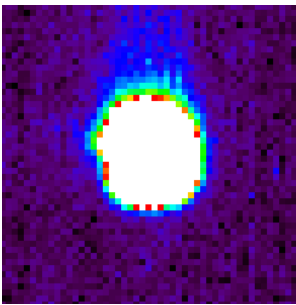
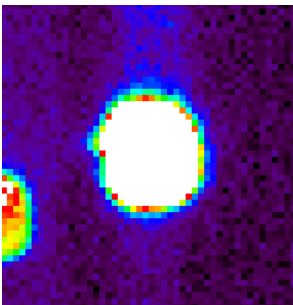
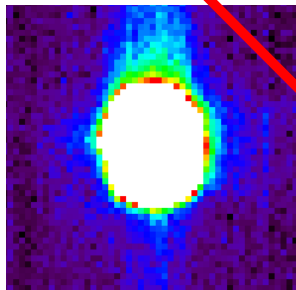
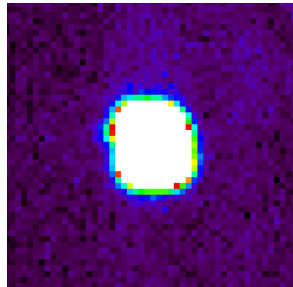
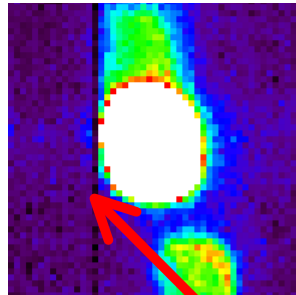
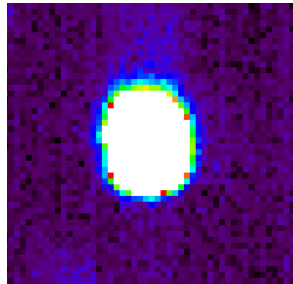
3% of pixels after 3000 days.



Evolution of the CTE in the CCD image and memory zone

Run LRa02
Oct 2008

Run SRc03
Avril 2011



Spread out of the PSF behind the image.
The photometric aperture take into account this effect.

Could be due to the electronic readout aging
Evolution of the polarisation voltage?

No such effect on the CCD E2. Can be seen only on very bright.

New traps appears



Efficiency: long term evolution.

The long term flux decrease is unchanged $6.4 \cdot 10^{-5}$ e-/day

New points: green crosses

