

# Detecting contaminating eclipsing binaries (CEBs) with the Corot colors

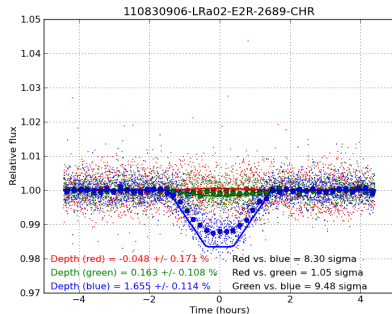
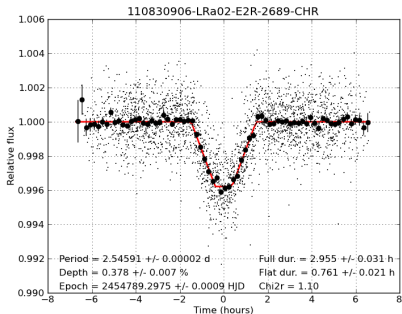
Pascal Bordé

Corot SC meeting #43 – Obs. Paris

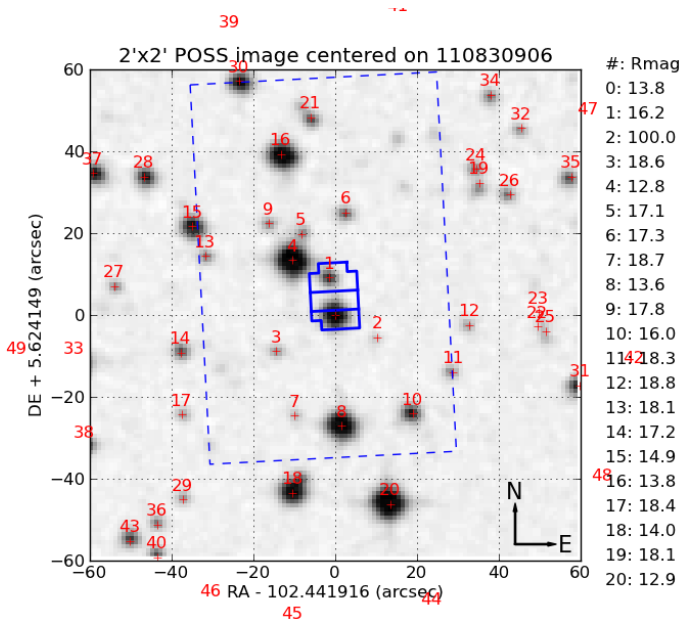
18 April 2012

# LRa02-E2R-2689-CHR transit light curves

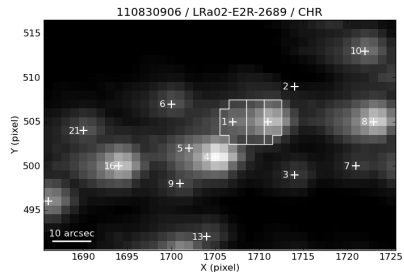
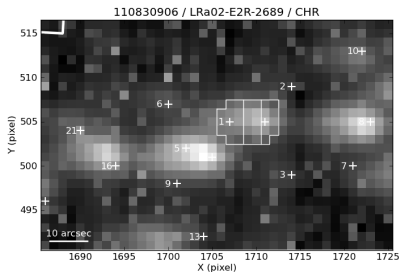
Computed photocenter shift: 0.006 pixel (Tingley & Deeg 2012)



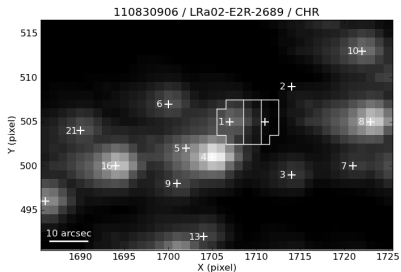
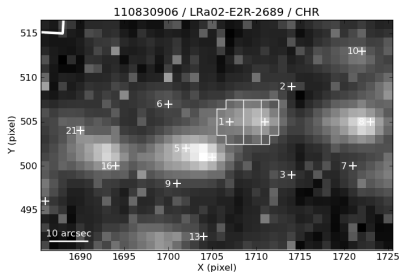
# The Palomar view of LRA02-E2R-2689-CHR



# The Corot view of LRa02-E2R-2689-CHR

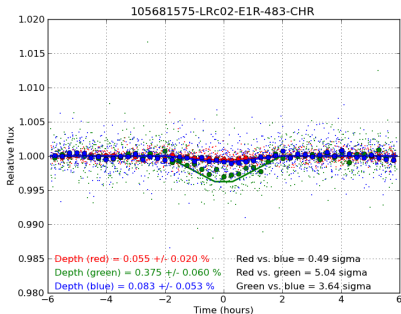
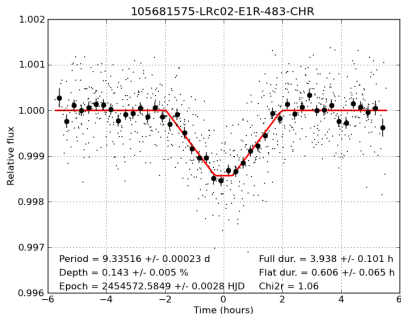


# The Corot view of LRa02-E2R-2689-CHR

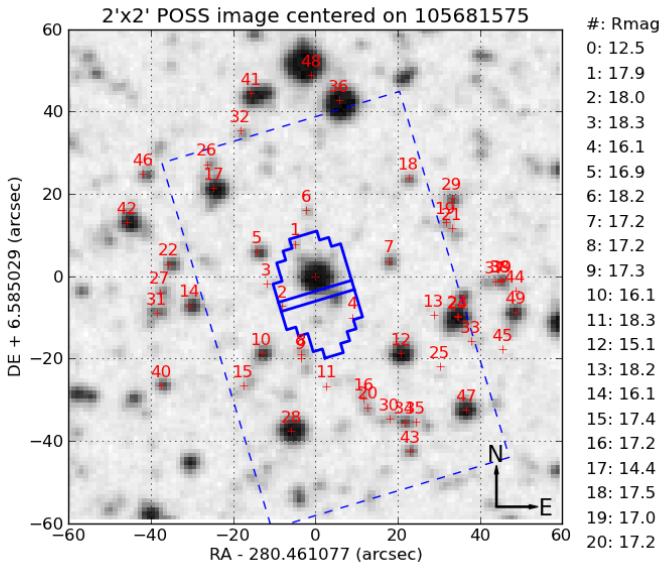


# LRc02-E1R-483-CHR transit light curves

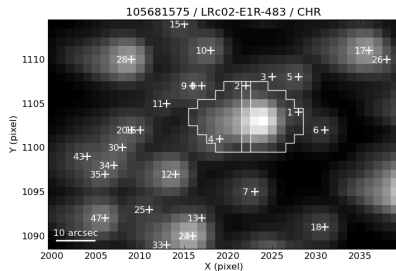
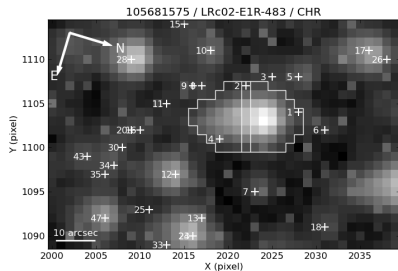
Computed photocenter shift: 0.003 pixel (Tingley & Deeg 2012)



# The Palomar view of LRC02-E1R-483-CHR



# The Corot view of LRc02-E1R-483-CHR





# The Corot view of LRc02-E1R-483-CHR

