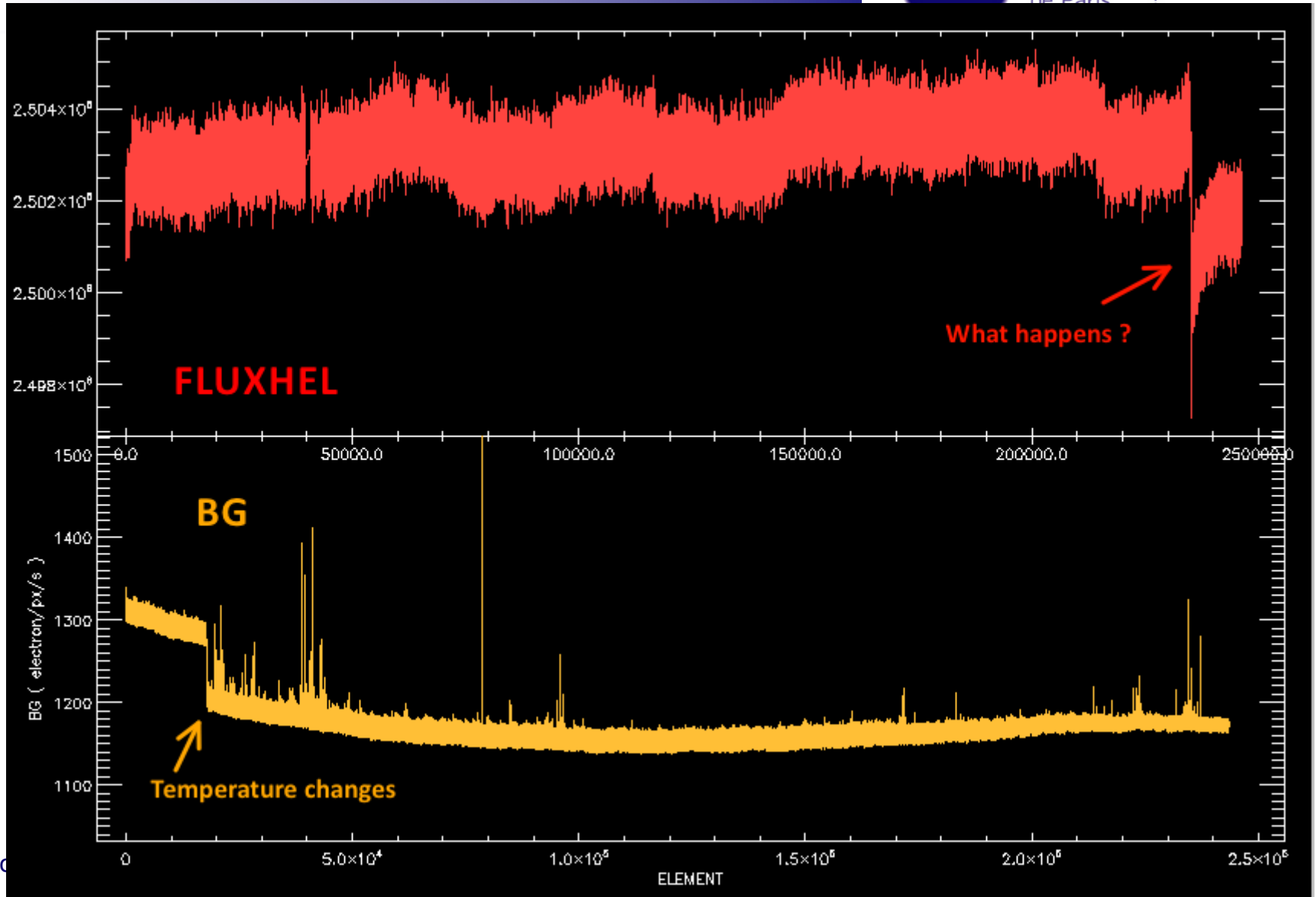


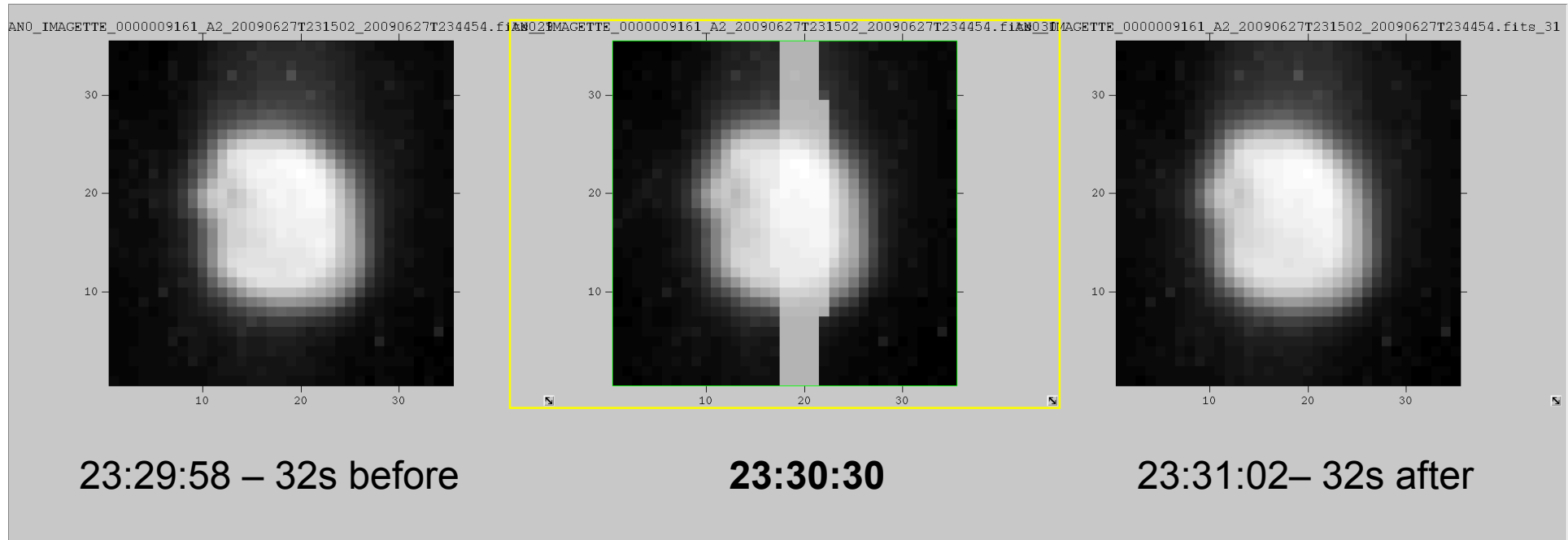


Some examples of some remaining work

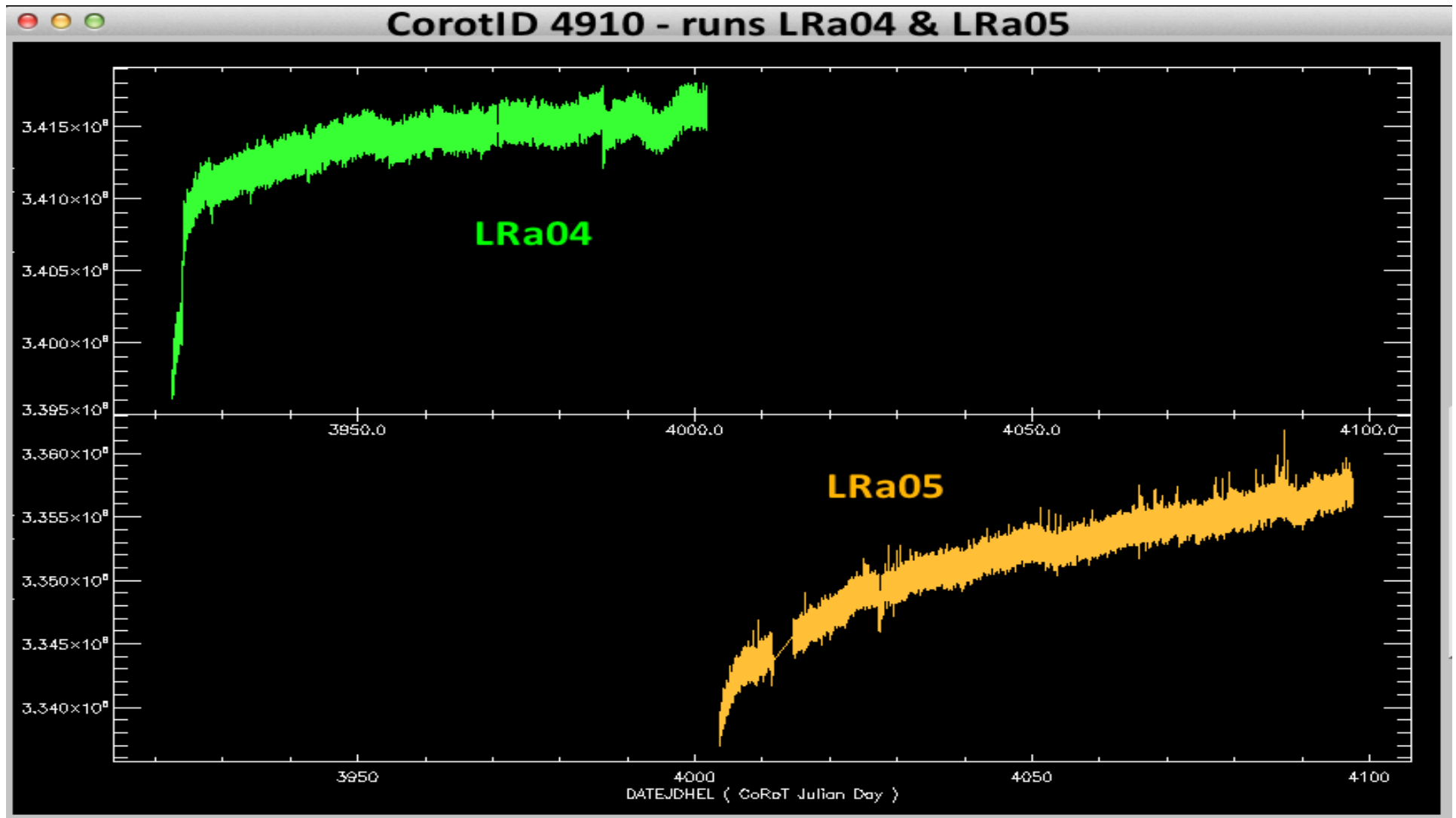
Sylviane Chaintreuil

LRc03 – Discontinuity in CorotID 9161 (seismo-pointing star)

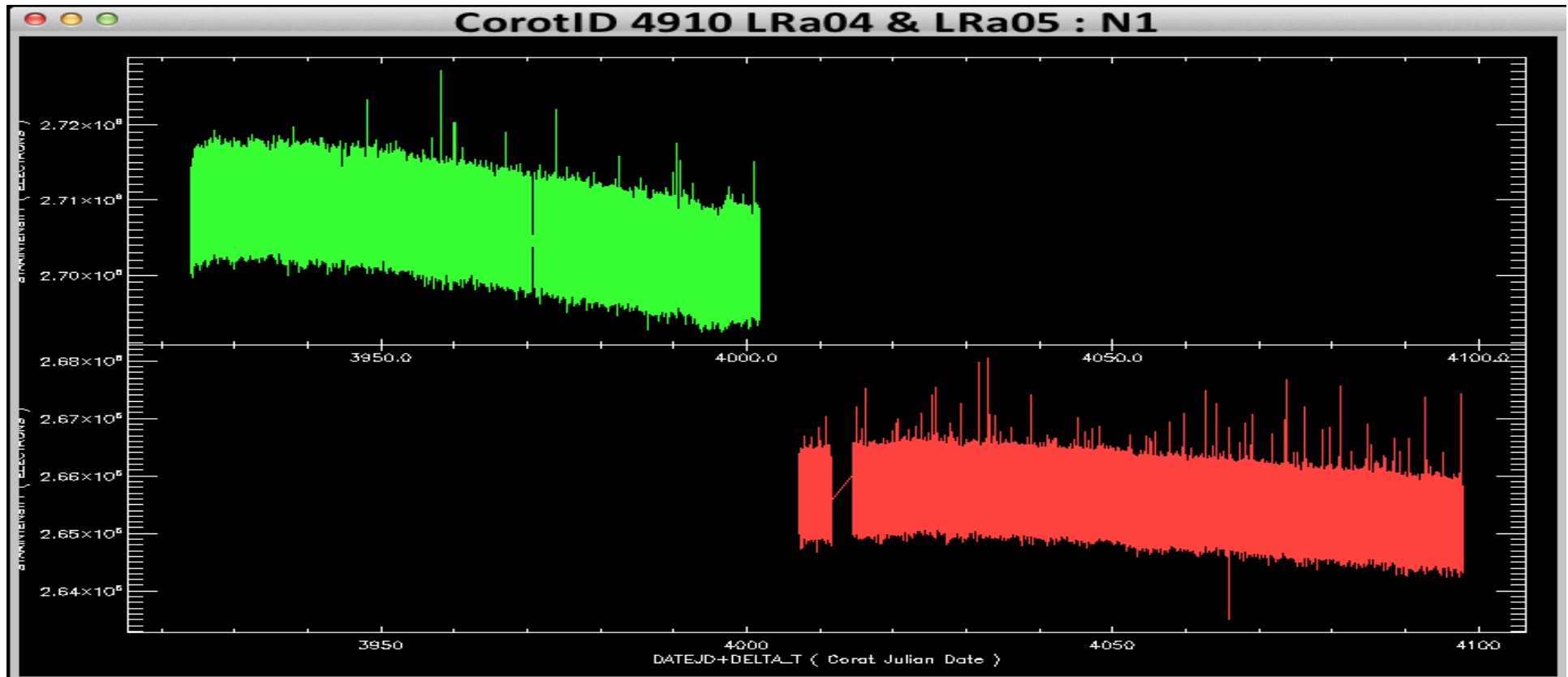




- The phenomenon is present only for one star and only a few seconds ; what is its origin ?
- What is the relation between the phenomenon and the discontinuity in the light curve ?



- The temperature in LRa04 isn't well corrected
- The increase of both lightcurves is strange



- The long term correction is largely over-estimated in the N2 pipeline
- The LT correction will be withdrawn so far
- More stars have to be studied to improve the correction

Correction of the temperatures jumps



- The temperatures jumps are not always well corrected
- Several reasons :
 - The duration of the signal before or after the change is too short
 - Try to adapt the correction to shorter durations
 - The height of the jump varies due to residuals of the background
 - This has to be studied after the correction of the background has been implemented

Distributed seismo data

Run	co-ls version	Corrections
IRa01	1.0	Cross-talk corrections using ground-measured patterns The correction of the offsets and of the Backgrounds are improved from these on-board Rough jitter correction : the line of sight is continuous by segments
LRc01 ; SRc01	1.1 ; 1.2	PSF are computed with better parameters Gain is correctly taken into account (the gain is different for each half-CCD)
LRa01 ; SRa01	1.3 ; 1.4	The values of the different gains on different half CCD is taken into account on every different product Better jitter correction : the excursion is computed continually on the whole run
SRc02 : SRa02 ; LRa02	1.8	Correction of the discontinuity caused by the breakdown of DPU1, also on the datation of the data Warning on the data where the jitter excursion can't corrected ; in this case, the value is interpolated Correction of minor bugs on the STATUS word (valid/invalid data)
LRc02 ; LRc03 ; LRc04	1.9 ; 2.1	Incorporation of the flag for inbound and outbound of the earth eclipses
LRa03 ; SRa03 ; LRc05 ; LRc06 ; SRa05	3.0	SAA and earth eclipses flags are coherent between N1 and N2 pipe-lines Only positive impacts are marked (instead of positive and negative) The effect of the diminution of the quantum efficiency is corrected
LRa05 ; LRc07 ; LRc08 ; SRa04 LRa04 : LRa06 ; LRc09	3.1 ; 3.2 3.3	The changes of the temperatures of the CCDs are corrected