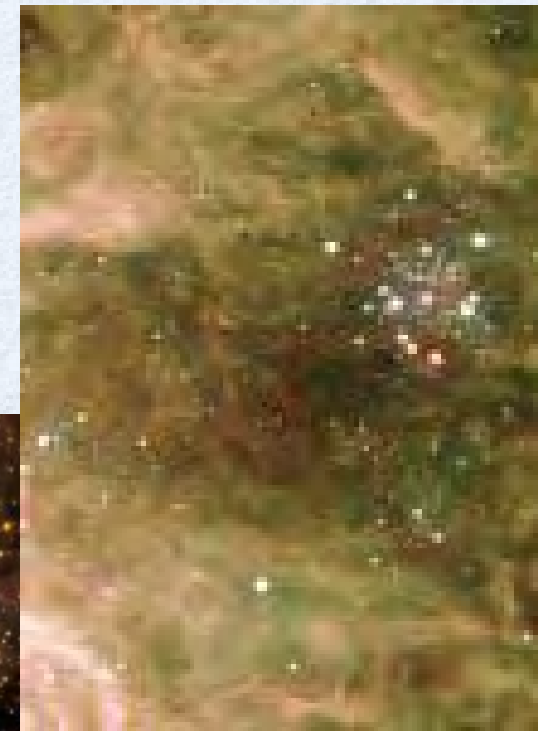
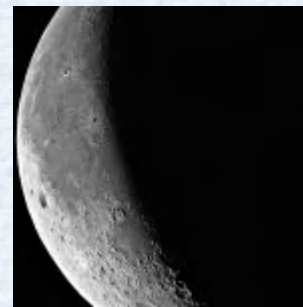


# International science policies since 1

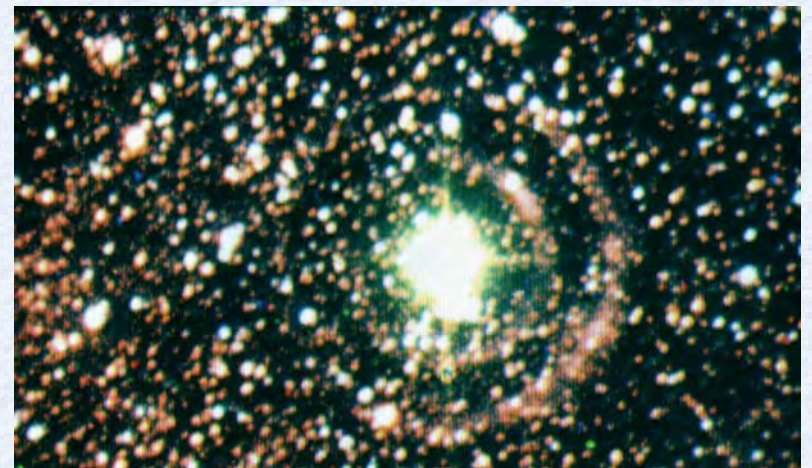


ctorate presented in 1967 (supervisi  
n-Claude Pecker)

ected member in the **National Comm**  
**CNRS, from 1967-1971** (secretary o  
nmittee): active participation in May  
ussions on how to reorganize and  
nage research laboratories. Altogeth

Member of the Board of Editors of the  
European journal **Astronomy & Astrophysics**  
from its early days in 1969

Member of the **IAU Commission 36** (the  
study of stellar atmospheres)







1976, Françoise becomes a member of the **ESA**  
Astronomy working group: this marks the birth of  
*European consciousness*

Member of the so-called ad-hoc Astronomy group  
**ESA**, 1977-1981

Member of the french Council for the **Hubble**  
**telescope** 1979-1981 & responsible for the RCP  
programmes for the HST »

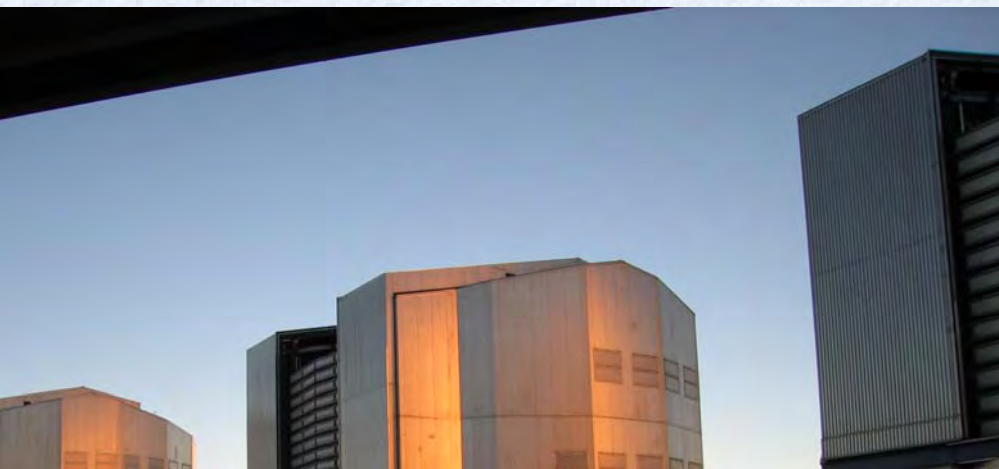
Member of the selection committee for the **IUE** s  
1978 and over 1981-1984

-president of the Scientific Council of the  
s Observatory (Pierre Charvin president)

of the two Editors-in-chief of the european  
nal Astronomy & Astrophysics, 1986-1988

1985, she is nominated for two years a member  
e High Council for Research and Techn  
red by the Ministre Hubert Curien and vi  
red by Francois Kourilsky

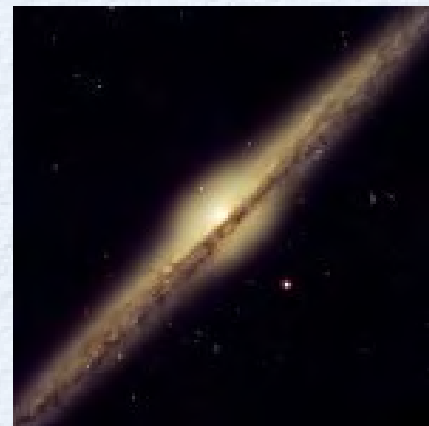
During the 80's, the **Very Large Telescope** project is building up and a **prospective committee** is setup by **INSU/CNRS**, to which France participates: in 1988, the VLT project is adopted.



# Research and Technology

1988, the Ministre for Research and Technology  
Robert Currien, calls Françoise Praderie as  
department *Earth-Ocean-Space-Environ*  
position she will hold from October 1988 to

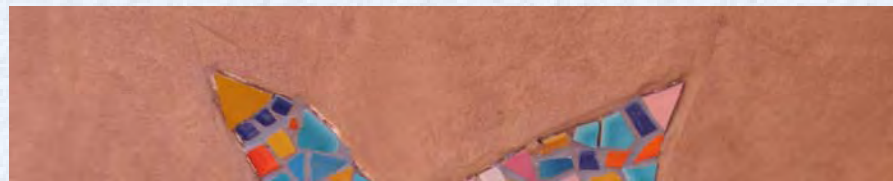
1



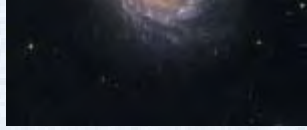
together with this responsibility, Françoise is  
involved in the management/supervision of v



n, as of October 1991, Françoise Pra  
tegrates Paris Observatory and beco  
*-time*) Science Officer at the Internatio  
ncil of Scientific Unions (ICSU). She  
olved in climate change programmes  
s close to the Organisation for Econo  
operation and Development (OECD).







March 1992, the 24 research ministers  
member-countries of OECD, setup and lau

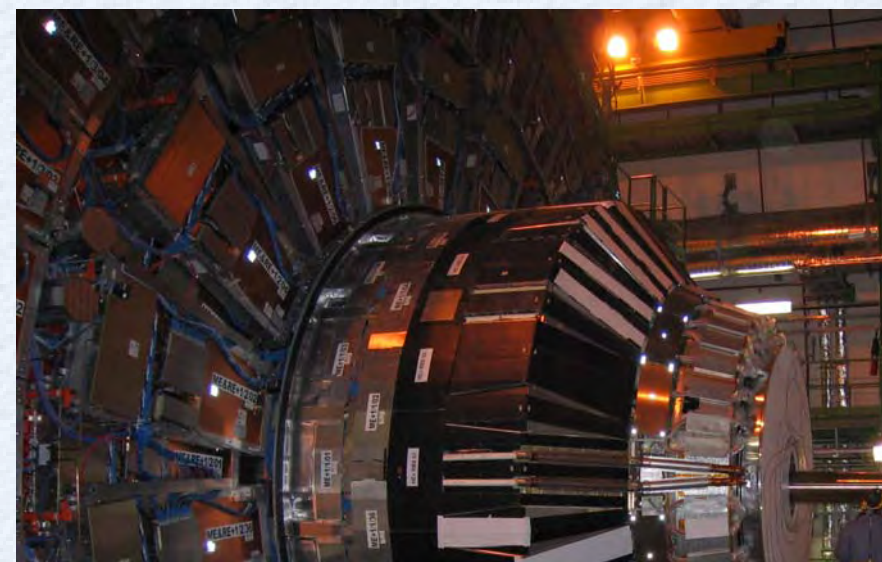
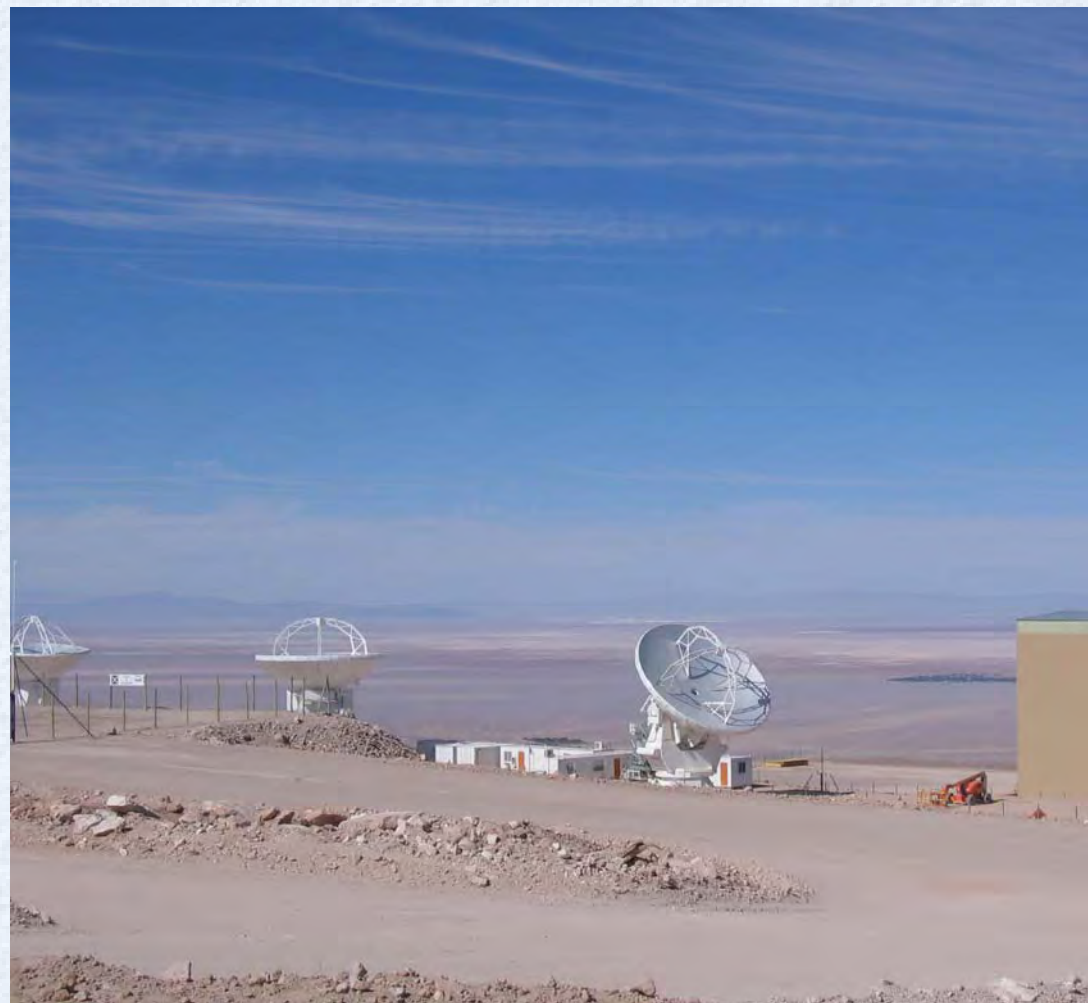
## megascience Forum

of the cold war → new situation → *boom*  
*collaboration among developed countries in b*  
*scientific equipments*

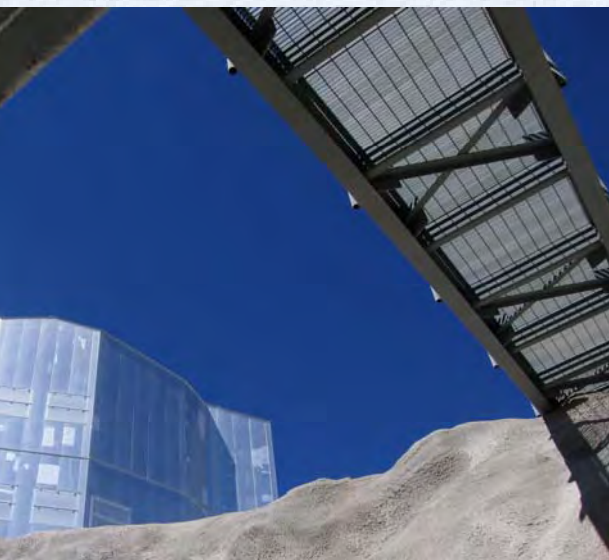
rt Chabbal, Director for Science, Tech  
ndustry at OECD gives Francoise Pr

es of **analyses** in  
ent areas of the  
avy science »,  
shing **documents**,  
nizing international  
ferences....

**LHC, ALMA** have  
fited from the Forum  
**ITER**



1999-2000, the Commission of the European Communities  
Françoise Praderie as a member of the  
Working Committee for the « *European Conference  
on Scientific Infrastructures* » (September 2000)  
reviewer of the Conference





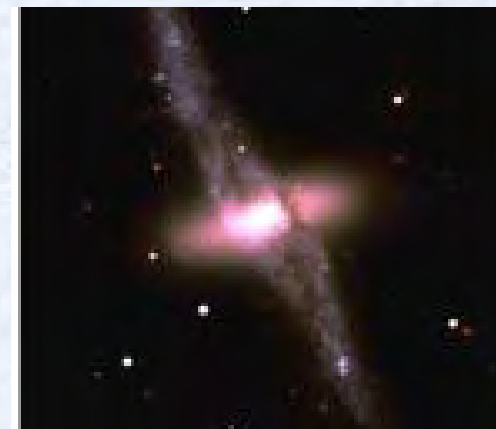
# Adviser to the Director of international relations at CNRS

- As of the beginning of 1996 and for one year, Françoise acts as advisor to the Director of the international affairs at CNRS
- Responsible for the network of CNRS offices abroad

ns from the OECD period

years at OECD:  
has realized how  
ts and politicians  
reat » the community  
S...

ne need for a strong &  
ropean association of



# Creation of Euroscience

presents her idea at a meeting in Orsay  
*the framework of the president election*

ed by some french scientists, including  
rdon, Jean-Pierre Bourguignon, Jean-  
lomon, Hervé Chneiweiss, Rémy  
etc. A group of scientists from all over



# science times



7 and for three years, Françoise  
becomes the **general secretary of**  
**nce**, Claude Kordon being president

nce today has about 2200 members  
uropean countries

**a forum** on problems common to all

# Euroscience Open Forum

**Euroscience Open Forum** is an open forum held every two years (Stockholm in 2006 & Barcelona in 2008)

is organized by the general secretariat of Euroscience  
located in Strasbourg

# Jump into ancient chinese astronomy

Françoise attends a lecture by a  
historian Zhang Guangda « *China and  
relations in Central Asia from the VIIth to  
XIIIth century* ». This is a seed...

2000 once she has more free time

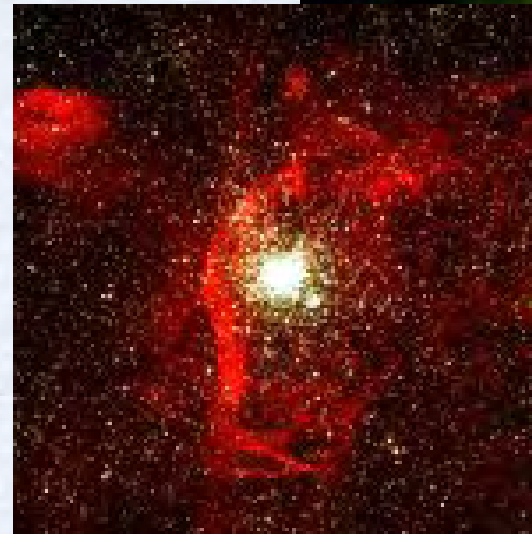
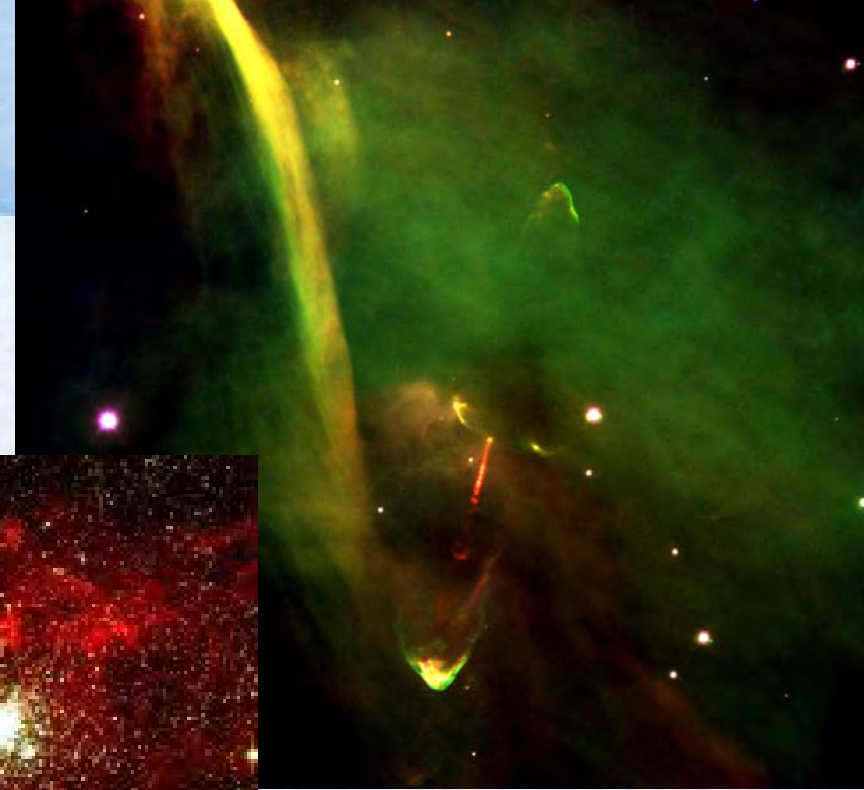


# Star maps from the Tang civilization

... jumps into both the Chinese language  
of stars from the Tang period, dated a  
... before JC.

... rotation with Jean Marie Bennet Bidou

prints of  
oise's  
oach



ntellectual rectitude, rigor

nse of collective interests

# Conclusions on her actions

and diverse career

research actions in the

European and

social science

about the

inter-entarity between





US...

- *Many thanks  
Françoise,*
- *For your numerous  
and essential  
contributions to our  
community*
- *For the model you  
have been along you*

